



FAIRFIELD COUNTY FOUNDATION NEWS

HELP US SPREAD THE WORD!

Please feel free to use the "forward to a friend" feature of this newsletter to help us spread the word about how the Fairfield County Foundation is building a legacy for our community.

2014 Annual Report Available



Click [here](#) to view!

Professional Advisors Manual Available

The Foundation's Professional Advisors Manual contains all the latest information about the Foundation and how we can help you better serve your clients. It is available on our [website](#).

Board of Trustees:

John Baughman,
Chairman

Sheila Heath,
Vice Chairman

Penny Wasem,
Treasurer

Wayne Custer,
Secretary

A Message From the Director

Dear Friends of the Foundation,

It's hard to believe it's February with temperatures reaching 60 degrees here in Fairfield County! We hope you're enjoying the unexpectedly warm weather and that it means spring weather is just around the corner.

Spring is an exciting time for the Foundation. With the deadline for preliminary grant proposals quickly approaching, we'd like to invite you to join us for an ice cream informational session where you can "get the scoop" on the Foundation's grant process. See the article below for details of this event. And as a reminder, scholarship applications are due **Monday, April 4, 2016**. We hope all eligible organizations and students will take advantage of these funding opportunities and look forward to receiving your applications!

We are continually grateful for your constant support of our projects and programs - without it, we wouldn't be able to continue our work of building a legacy in our community, and for that we thank you.

Amy Eyman
Executive Director

Scholarship Application Process Now Live



The Fairfield County Foundation scholarship application process is now live on our [website](#). Once again we are working with AcademicWorks, a comprehensive Scholarship Management Solution, that allows the Foundation to automatically match students with relevant scholarships. This online scholarship process makes applying for scholarships more efficient for both the students and the reviewers. The deadline for all applications to be complete is Monday, April 4, 2016.

Jason Baker
 Cathy Bitler
 Victor Christopher
 Jonathan Clark
 Brian Shonk
 Kamilla Sigafoos
 James Smith
 Howard Sniderman
 Gerri Strigle
 Gary Taylor
 Richard Warner

Staff:

Amy Eyman,
Executive Director

Renee Reilly,
Financial Officer

Mindy Farrow,
Office Manager

Debee Monger,
Administrative Assistant

Valerie Irion,
Grant Administrator

Contact Information

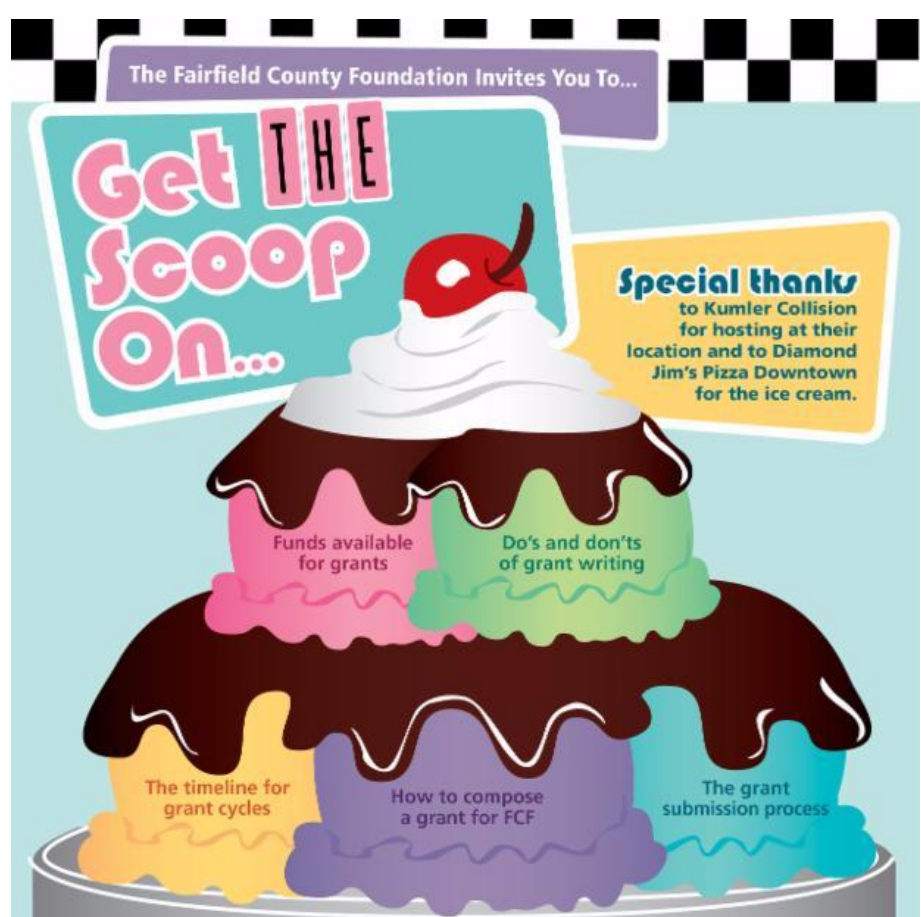
Fairfield County Foundation

162 East Main Street
 Lancaster, Ohio 43130

Phone 740.654.8451

Fax 740.654.3971

[Fairfield County Foundation](http://FairfieldCountyFoundation.org)



Join us for an ice cream informational meeting and "get the scoop" on the Foundation's grant process!

February 17, 2016 from 2-4 p.m.
 2283 E. Main Street, located next to Kumler Collision

Please RSVP to aezman@fairfieldcountyfoundation.org by
 Friday, February 12th.

Seating is limited to the first 50 RSVP's.

What is a Community Foundation?

A community foundation is a non-profit, publicly supported, nonsectarian philanthropic institution with a long-term goal of building permanent funds established by many donors to carry out their charitable interests, and for the broad-based charitable interest of and for the residents of a defined geographic area.

Krile Communications, 1217 McGrery Rd. SE, Lancaster, OH 43130

SafeUnsubscribe™_angela@krilecommunications.com

[Forward email](#) | [Update Profile](#) | [About our service provider](#)

Sent by aezman@fairfieldcountyfoundation.org in collaboration with



[Try it free today](#)