



HINDSIGHT

2020

A look back on a year of resilience, generosity and community

2020 ANNUAL REPORT



**The Fairfield County Foundation
mission is to build a legacy through philanthropy
and stewardship for a stronger community.
The Foundation is administered locally to better
serve our community needs.**

A special thank you to Rick Hartung and Alison Murphy for their support of the Fairfield County Foundation and their help with our Annual Report.

The donor listings report gifts for calendar year 2020. Every effort has been made to ensure their accuracy. If your name or gift has been omitted or listed incorrectly, we sincerely apologize. Please let us know of any errors so that we can correct our records. Thank you for your continued support.

The Foundation is accredited by the National Standards for U.S. Community Foundations Program, demonstrating that it has met the nation's highest philanthropic standards for operational quality, integrity and accountability.

162 East Main Street, Lancaster, Ohio 43130-3712 • 740.654.8451 • www.fairfieldcountyfoundation.org

TABLE OF CONTENTS

2	Our message to you	14	Funds
5	What we do	29	Donors by fund
6	A look back at 2020	37	Grants by fund
8	Setting up a fund	40	Awards
10	Gifts in memory/honor	42	Financial
12	COVID-19 fund	44	Ambassadors' Club

OUR MESSAGE

Dear Valued Friend of the Foundation,

In a time where there is a momentous urge to forge ahead, there is value in pausing to reflect on the journey we have endured. The year 2020 will forever be remembered as a time of uncertainty, rife with unprecedented events and challenges. Yet, as we reflect upon it, it can also be remembered as a year of unmatched resilience, generosity and tenacity within our incredible community. If the COVID-19 pandemic taught us anything, it is that none of us have a crystal ball to predict the future, but we do have the fortitude to come together, even when we are apart.

This year will forever be a testament to the exceptionally special place we call home. No matter what challenges arrived, and they were abundant, our community was eager to replenish the existing gaps for their neighbors in need. During the height of the economic hardships brought on by the pandemic, the Fairfield County Foundation partnered with the United Way of Fairfield County to establish the Fairfield County COVID-19 Relief Fund to address the urgent needs facing our local nonprofits. Through this community-driven donation process, we witnessed the collective impact that Fairfield County's individuals, families and businesses could have together.

Thanks to our incredibly generous donors, we were able to grant more than \$150,000 to 45 different organizations. While we will never know for sure how many of our neighbors were impacted by this effort, we do know that every supporter contributed to the tremendous impact we had together.

The extraordinary impact of this collective effort only underscores the need to grow our Community Impact Fund, which was launched in 2019. While we hope a year of crisis only exists in hindsight, this experience has demonstrated the importance of having a life preserver for our community's economic vitality during whatever storms may arise.

As we reflect on this past year, and the decades of impact we've had together since 1989, the Foundation is honored to continue building a legacy of philanthropy and stewardship through the collective strength we have together. Thank you for your continued support of the Foundation, and your generosity to help us help those who need it most.



Amy Eyman

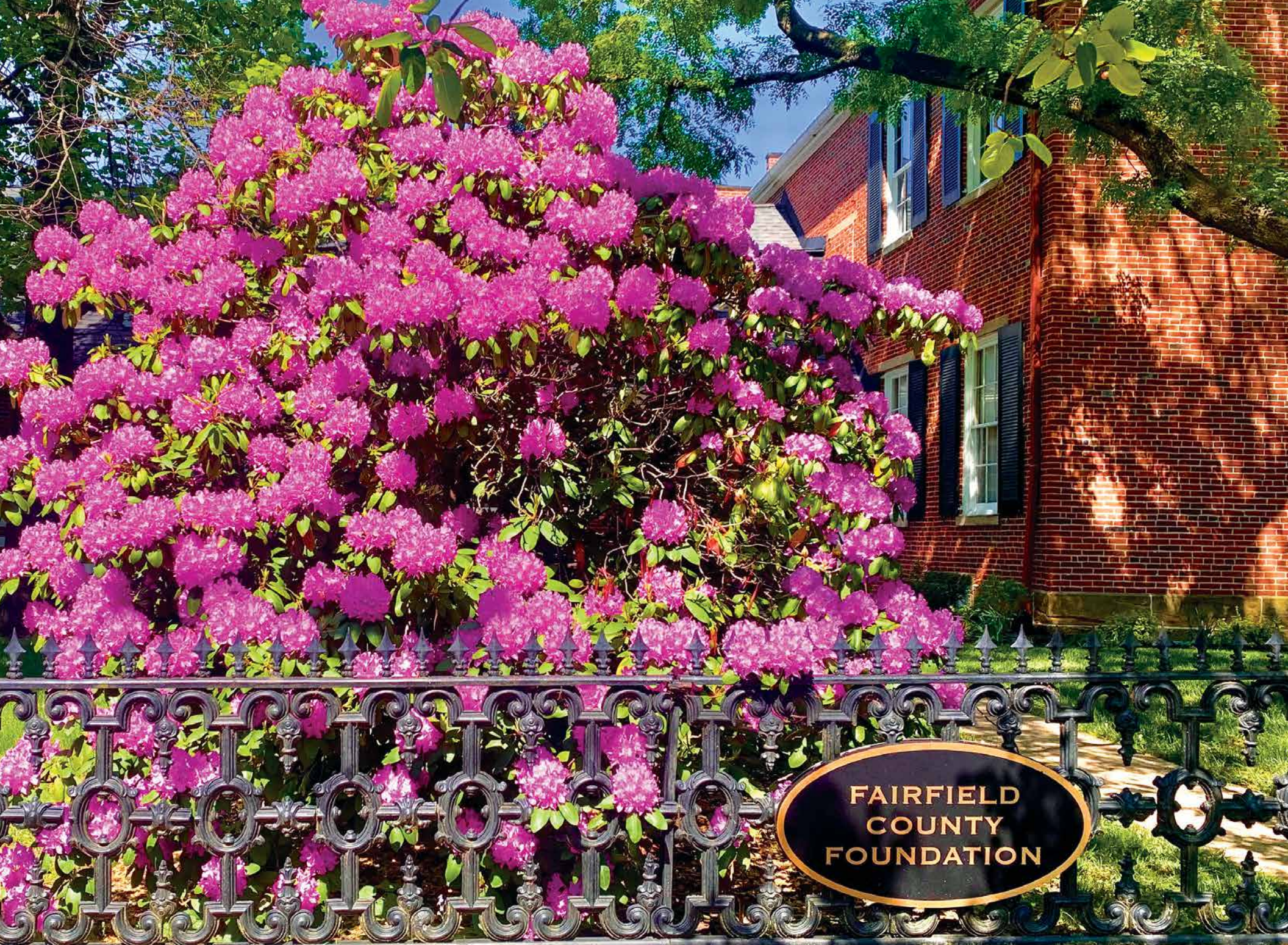
Amy Eyman
Executive Director



Molly Bates

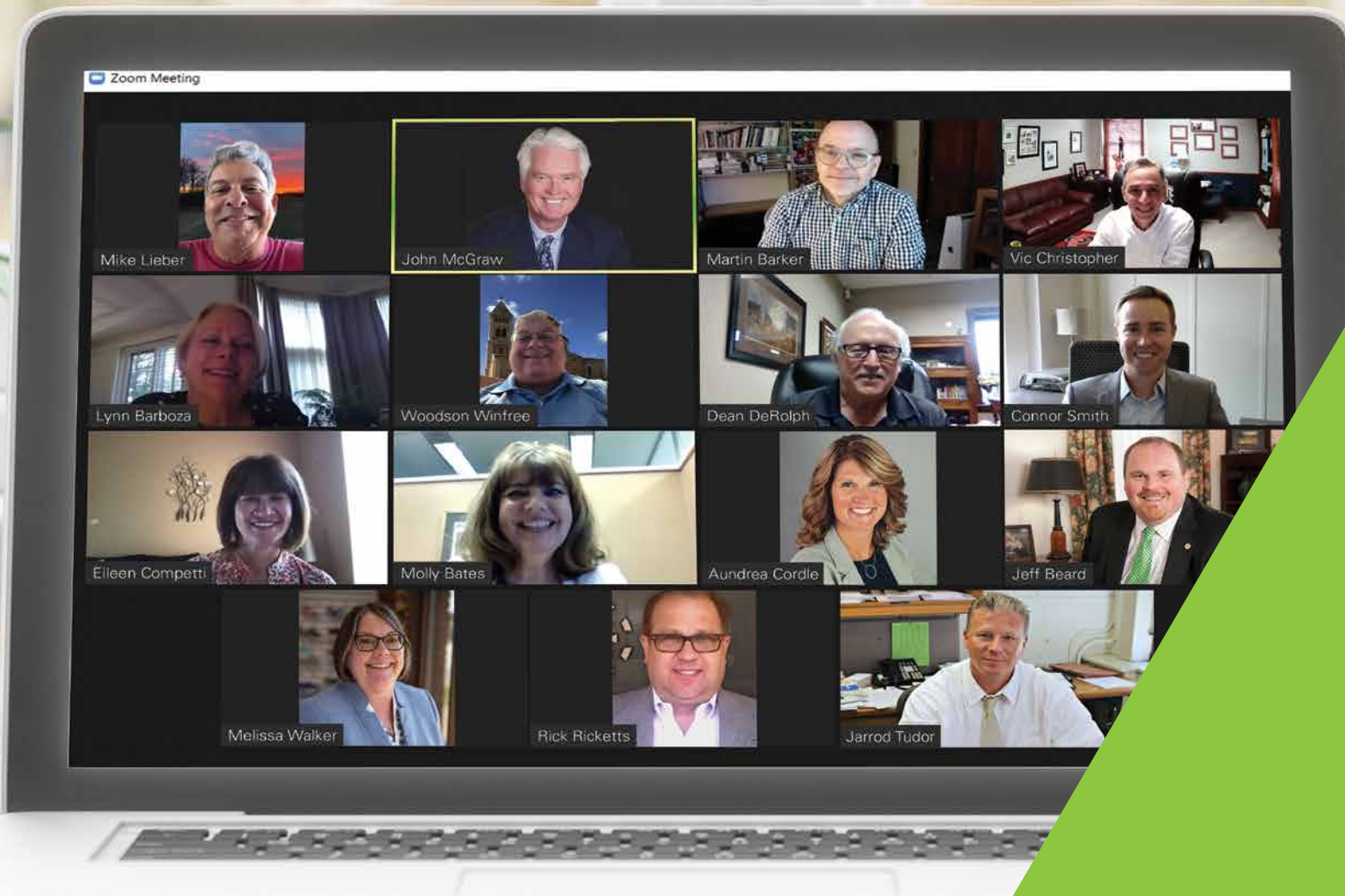
Molly Bates
Chairman, Board of Trustees





FAIRFIELD
COUNTY
FOUNDATION

BOARD MEMBERS & STAFF



WHAT WE DO

About Us

The Fairfield County Foundation, a 501(c)(3) non-profit, and its many supporters, help to enhance the quality of life and economic viability of our community. The Foundation was formed in 1989, when Probate Judge S. Farrell Jackson challenged our community to establish a foundation to keep significant trust funds invested locally. A small committee of caring citizens joined together to establish the Foundation to provide an entity to administer contributions from individuals, families, corporations and organizations.



Staff

Kerry Sheets, *Financial Officer*

Sarah Stoughton, *Donor Services Officer*

Abby King, *Program Officer*

Stephanie Herman, *Administrative Assistant*

Amy Eyman, *Executive Director*

A LOOK BACK AT 2020



GRANTS

to public charities in Fairfield County,
totaling more than:

\$2.2M



SCHOLARSHIPS

awarded to Fairfield County students to help in
their goal to attain higher education:

\$705,095



ASSETS

in total as of
December 31, 2020:

\$59.6M



CONTRIBUTIONS

in memory/honor of loved ones, to support
a special fund or charity, to establish a new fund,
or as estate bequests:

\$2.5M



NEW FUNDS

established to support the causes important
to individual donors:

19

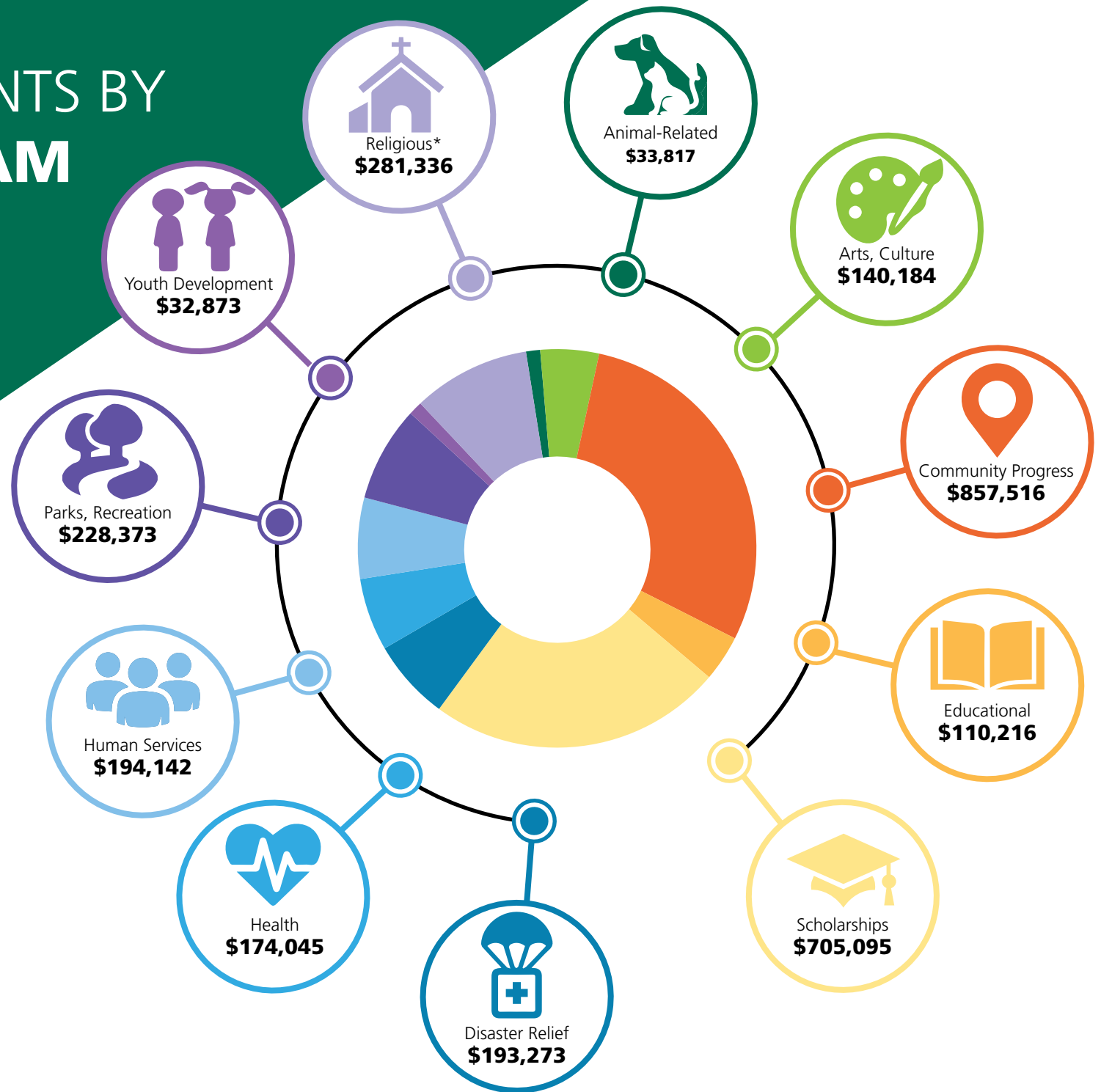
- Barrows Family Fund
- B. More Foundation Fund
- B. More Foundation Unrestricted Fund
- Chloe Metzger Fund
- Fairfield County COVID-19 Relief Fund

- George and Pam Daft Fund
- Good Neighbors in the Village Endowment and Program Fund
- Joan and Melvin Moore Fund
- Kenny Kosch Memorial Scholarship Fund
- Kent and Judy Miller Charitable Fund
- R. Brian Cline Scholarship Fund
- Robert Wolfinger Lancaster Fund
- Sophie Strong Scholarship Fund
- S+W Foundation Scholarship Fund
- The Fairfield County Diversity, Inclusion and Empowerment Fund
- The Lighthouse Fund
- The Wagnalls Memorial Library Fund
- Toni L. McKinney Memorial Fund
- William L. and Jo Ellen Parker Charitable Fund

COVID-19 RELIEF FUND

\$156,000 raised and awarded in collaboration with United Way of Fairfield County to address COVID-19 related needs throughout the community

ALL GRANTS BY PROGRAM



**Religious grants are awarded through donor advised funds and endowment/agency funds.*



GIFTS

Setting up a Fund with the Foundation

Your Foundation is here to help you build your legacy. We can help you determine your charitable goals, such as deciding if you want family members involved, both now and/or in the future; consider how much involvement you want in selecting the charitable organizations that will receive grants from your fund; and think about how much you want to give in charitable contributions each year and how you want to give it.

We make giving easy and effective, accepting a wide variety of gifts and providing donors with a number of charitable options. Our professional staff has in-depth understanding of the issues, opportunities and resources that shape our community. The Foundation has several options for setting up a fund that best meet your giving goals, including the following:

- **Donor-Advised Funds:** This type of fund enables donors or their designees to recommend grants based on their personal charitable interests.
- **Unrestricted Funds:** Unrestricted Funds are gifts to the Foundation's unrestricted general fund. The principal and income is distributed at the Foundation's discretion in the form of grants to 501(c) (3) organizations. A minimum gift of \$5,000 is required to establish a named fund. Gifts of any amount are accepted into the general fund.
- **Scholarship Funds:** Individuals, families, companies or organizations can establish Scholarship Funds. Once in place, a Scholarship Fund continues to grow with additional contributions from the original donors, from other contributions and through market growth. The donor of a Scholarship Fund has the ability to define the scholarship's advisory committee and the guidelines for candidate selection, requirements and award use.
- **Agency Funds or Endowments:** Agency Funds or Endowments can be created to perpetually support your community service agency. Agency funds hold assets for a charitable organization and distribute the principal or earned income in accordance with the agency's specific instructions.
- **Designated Funds:** Designated Funds are established to ensure that support will be provided to specific eligible non-profit organizations, often organizations that donors have been involved with during their lifetimes. This is an opportunity to leave a lasting legacy in the donor's name.

Making a Gift to the Foundation

A variety of assets can be used to make charitable gifts and there are many ways that you can give immediately or in the future.

- **Cash:** Cash gifts are an easy way to make an impact in your community and allow you to give at any time.
- **Securities:** Securities, both publicly traded and closely held, can be used to set up a fund.
- **Real and Personal Property:** Gifting real and personal property often allows an individual to contribute more than they may have thought possible.
- **IRA/Retirement/Pension Fund Assets:** Retirement assets are most often used as testamentary gifts, creating charitable funds as part of an overall estate plan.
- **Life Insurance:** Life insurance makes it possible to make meaningful gifts to the community.
- **Unique Assets:** Examples might include stamp, coin or art collections, copyrights and patents, royalties, or other unique assets of value.
- **Wills and Bequeaths:** Bequests offer varied ways of giving to the Foundation. Cash securities or other property may be bequeathed in one's will.
- **Charitable Remainder Trusts:** A Charitable Remainder Trust provides life-long income for one or several income beneficiaries, such as the donor and the donor's spouse, and leaves the remainder interest to the Foundation or designated beneficiary.
- **Charitable Lead Trusts:** The income generated from assets placed in a Charitable Lead Trust is paid to the Foundation for a period of years, after which the trust is terminated and the assets are returned to the donor.
- **Charitable Gift Annuities:** The Charitable Gift Annuity can make it possible for donors to assist the community in the future while providing lifetime income for themselves. Upon the death of the donor, the remaining principal is retained by the Foundation to carry out the donor's charitable intentions.
- **Transfer of a Private Foundation:** This type of gift affords many advantages, including lower overhead, staff to assist with charitable goals, and a higher tax deduction for any future gifts, to name a few.

Make a Difference Today

By establishing a fund with us, you will know your gift is in good hands. Our staff can help you identify where your gift will best benefit the community. The result is a lasting legacy that addresses the needs of today and the challenges of tomorrow, establishes a tradition of philanthropy and ensures that your fund will develop community capital to improve the quality of life now and well into the future. We are your local source for comprehensive charitable giving. **To learn more about establishing a fund or donating to the Foundation, please contact us today at 740.654.8451.**

GIFTS

2020 Gifts Made In Memory Of

Angeline Ausec
Peggy Berge
Gale Baumgardner Betterly
Bob and Pat Binder
Alaina Boggs
Sylvan Cleland
Russell Brian Cline
Teresa K. Blanton Edwards
The Fissell Family
The Fridley Family
Bud Goodman
Nelson S. Groves
Len Hajost
David A. Harcum
Patrick Hewitt
Greg Henwood
Chad Hoffman
Jeffrey Hubbard
Sherry Hubbard
William B. Jackson
David L. Johns
Ron Keaton
Kermit Richard Kemmerer
Mike Kiger
Nana Della Kleinline
Peggy Kose
Isabel Kraner
James Clem Kraner
James Garfield Kraner
Amanda Lambert
Erik Landis
Jamey Landis
Collis Gundy Lane
Donn Leith
Maggie Lyons
Sophie Mazgay
Toni L. McKinney

Donna Miller
Eleanor and Louisa Mosley
Jaakko Naayers
Betty Pearce
Thomas Pearce
Ryan Reeb
Grandpa Reiser
Reed Riegel
Richard Ross
Brian Sampson
Darrell Sanner
Richard and Julia Scamehorn
Mollee Seifert
Scott Seitz, LHS Class of '89
Anne Sellitti
Don and Gay Sharp
Marvin Sharp
William Shook
Barbara Smith
Jessie J. Smith
Mary Jane Smith
Wayne Smith
Brenda Solt
Fred Strawser
Shelly Strigle
Doris Suver
Marie Turley
Ford Turner
Leefe Purvis Turner
Irene Walters
Marie Walters
Joan Weaver
Janet Kay Williams
Jeannine Winter
Roger and Doris Wolfe
Fred and Frances Zollinger

2020 Gifts Made In Honor Of

Afterschool Homework Club
Angie Ausec
Kimberly Baker
Bigs and Littles
Robert Binder
Linda Bolger
Ginger Caito
Cheri Christ
Nelson Chu
Judith Cintula
Nancy Crow
Suzanne Culver
Anne Davy
Charlie and Thomas Deagle
Jean Doan
Larry Eggert and
Becky Eggert Shook
Linda L. Ellinger
John and Amy Eyman
Hank and Stacey Eyman
Anna Gaal
Grandpa P.J.
Rich Hampton
Dave and June Harcum
Pat Hartman
Barbara Hunzicker
Ron Keaton
Dick Keller
Anne Hart Kiphen
Lancaster Fairfield County
Charity Newsies
LHS Class of '64
The LaRe Family
Carol Seubert Marx
Hollie Merchant's cousin, Thayla
Natalee Naayers
Sam and Eileen Nihiser

Haley Pearce
Thom and Johanna Pearce
Pickerington Teen Volunteers
Sally and Tom Price
Jolyn Pugh
Ryan Reeb and Ryan's
Rave to Save
John and Rita Ricketts
JoAnn Schosek
Sarah Secoy
Susan Secoy
Senior Citizens of
Fairfield County
Jane Sharp
Jessie J. Smith
Hollie Staten
John Stitzlein
Becky Strickler
Elbert Strickler
Greg and April Swinehart
Those who work hard for
Fairfield County
Mary Travis
Robert and Carol Trocchia
Wayne Vanmeter
Deborah A. Wagner
Jo Weiser
Mr. & Mrs. Steven Willard
Jeannine Winter
Nana Woods
Y Charitable

WHY I WORK WITH THE **FOUNDATION**

Andrew Boyd, President
Blue Label Packaging Company

THE BLUE LABEL FUND



Why did you set up a fund through the Foundation?

The Blue Label Fund has existed for many years and we administered it and managed all of our philanthropy work internally. We recently decided to move the fund to the Foundation, a decision that has saved us significant time and resources! The Foundation has made the administration of the Blue Label Fund very easy. In addition, their familiarity with local non-profits and understanding of the needs in our community helps us ensure that we are maximizing the impact of our giving. They have been an ideal partner for us.

How has your involvement with the Foundation served as a benefit to your family business?

We are a growing business with a very lean management staff. Working with the Foundation has really improved our ability to partner with local non-profit organizations in a strategic way and make a meaningful impact on the community we work in.

What do you hope your investment does? Generally and specifically through the fund?

The Blue Label Fund contributes to organizations and causes that align with our overall goal, making our community a better place for everyone. We partner with organizations that work toward one or more of the following goals:

- Give food and basic necessities to those in need
- Offer healthcare for people who don't have access
- Provide scholarships and funding for people who lack resources to pursue technical and secondary educations
- Help protect the environment and combat the effects of climate change
- Promote diversity and inclusion in the communities where we work

What is your favorite thing about the Fairfield County community?

Personally? Pink Cricket. As an organization, we love the potential that Fairfield County presents. Our business has its roots here, and we are happy to see the community pivoting to attract new industrial partners and improving the infrastructure and resources available to its citizens. Our goal is to be a part of this progress and position our county and town to succeed as the central Ohio region continues to thrive.

COVID-19 COMMUNITY RELIEF FUND

A PARTNERSHIP WITH THE UNITED WAY OF FAIRFIELD COUNTY TO SUPPORT NON-PROFITS AS THEY SERVE THE COMMUNITY THROUGH CRISIS



ROBERT K FOX YMCA

When the COVID-19 pandemic hit, the childcare sector was majorly impacted as the virus called for extensive safety measures, supplies and social distancing. Thanks to an award from the Fairfield County Foundation's COVID-19 Relief Fund, the Robert K. Fox YMCA was able to follow strict guidelines, purchase PPE supplies essential to resume daily operations, and continue to help as many families needing reliable childcare as possible by keeping qualified staff on board.

As part of its childcare offerings, the YMCA was able to directly support first responders in the community through its Pandemic Child Care program, which was also supported through the COVID-19 funding. Summer camps were held, benefitting youth in desperate need of positive social interaction after extended periods of isolation. And, the YMCA went on to create a blended learning Y Academy School Program, which works closely with schools to provide a place for children to learn on their days out of the classroom, while allowing their parents to continue working.



ART & CLAY

Art & Clay on Main is an accessible art studio in historic downtown Lancaster that shares its facility with Square 7 Coffee House. Both entities are Social Enterprises of the Fairfield County Board of Developmental Disabilities.

During the pandemic, the team had to make numerous, costly physical modifications to ensure safety for visitors. Thanks to the Fairfield County COVID-19 Relief Fund, they were able to purchase signage for tables, standing signs, hands-free faucets, and new towel and soap dispensers for restrooms, the coffee kitchen and paint bar. The funds also allowed for hand-sanitizer stations to be installed throughout the studio, as well as plexi-glass shields on the paint bar and cash-out stations and a chemical cleaner station with high virus kill-rates. Outside of the general safety measures, the increased cleaning and sanitizing needed for safe operations meant adding many tasks to team members' daily responsibilities and increasing the number of labor hours and team members.



CONNEXION WEST

Connexion West is a community center with more than 50 programs and outreaches focused on helping individuals and families in Lancaster. At the start of the pandemic, Connexion West had over 20 organizations collaborate to provide 27,000 meals for Fairfield County students. As time went on, the need remained but dollars to support the cause were dwindling. A grant from the COVID-19 Relief Fund alleviated some of the financial burden of replenishing supplies and Connexion West was able to package 2,000 boxes, each box containing food for five meals for local students.

Looking back on the experience, Connexion West knows the value of connection within our local community, and says the Fairfield County Foundation is a key part of that network, finding ways to fulfill their mission during hardships and pushing our community forward.

COVID-19 FUND GRANT RECIPIENTS

Afterschool Programs of Lancaster
AHA! A Hands-On Children's Museum, Inc.
American Legion - Post 283
American Red Cross
Big Brothers Big Sisters of Fairfield County, Inc.
Bottoms Up Diaper Drive
Canal Winchester Human Services
Columbus Blessing Boxes Project
Connexion West
Decorative Arts Center of Ohio
Destination Downtown Lancaster
Fairfield Center for disABILITIES & Cerebral Palsy, Inc.
Fairfield Community Health Center
Fairfield County TeenWorks
Fairfield Heritage Association
Fairfield Industries, DBA Art & Clay
Fairfield Medical Center Foundation
Fairfield Up, Inc.
Foundation Dinners
Foundation Shelters
Habitat for Humanity of SE Ohio
Hardbarger Impact Ministries
Integrated Services for Behavioral Health
Keller Market House
The Lancaster Festival, Inc.
Lancaster First United Methodist Church - Community Kitchen
Lancaster Vineyard Church - Food Pantry
Lancaster-Fairfield Community Action Agency
The Lighthouse, Inc.
Lutheran Social Services
Maple Street United Methodist Church - Community Kitchen
Maywood Mission
Meals on Wheels Fairfield County
New Hope Church - Food Pantry
Ohio Glass Museum
Ohio Restaurant Assoc Education Foundation, Inc.
Pickerington Public Library
Robert K. Fox Family Y
Sozo Pediatrics
Spreading The Sparkle, Inc.
St. Mark Church - Food Pantry
St. Vincent de Paul Society of Lancaster



KELLER MARKET HOUSE

Keller Market House provides an integral link between our community's families and local food producers. Like many areas of the supply chain, access and demand for locally-sourced, fresh foods was dramatically impacted by the COVID-19 pandemic. This included never-before-seen disruptions to the production, supply and demand for meat.

Local producers were struggling to manage issues, including access to processing facilities and getting their products to customers in a safe and consistent manner. Thanks to assistance from the COVID-19 Relief Fund, Keller Market House was able to address some of these supply chain concerns by purchasing an additional commercial retail freezer to display frozen meat raised by local farmers.



MAYWOOD MISSION

For more than a century, Maywood Mission has served Fairfield County by helping its most vulnerable neighbors in a multitude of ways. As one of its services, Maywood Mission offered the community preschool and before and after care for school-aged children. When the pandemic hit, they were faced with a pressing need to establish space and supplies for the Maywood Learning Center to support school-aged children who were learning remotely.

Through the COVID-19 Relief Fund, Maywood Mission equipped two classrooms for K-6 students complete with headsets, academic posters, flash cards, sanitizing supplies, dry erase boards and markers, desks, a printer and supplies, and various other resources to provide our students with a positive and nurturing learning environment. Throughout the process, Maywood Mission also developed a partnership with Ohio Christian University education students who assisted with tutoring, teaching and coaching students as a component to a college course.

FUNDS



Donor-Advised Funds

This type of fund is one of our most appealing charitable vehicles. Donor-Advised Funds make possible several options, such as: making a charitable gift now, the ability to make suggestions regarding which charities you would like to support, setting up a fund through your will/estate, and naming certain people as advisors to your fund. Donors receive both tax and philanthropic benefits in a simple format with a high degree of flexibility.

Barrows Family – to benefit the residents of Fairfield County and other charitable causes.

John and Marcia Baughman Family – to benefit St. Mary of the Assumption Church's special liturgical operating fund, "For the Honor of God;" the Ohio University Foundation via the Baughman Family Scholarship Fund at OU-L; the Fox Family Y's Partner for Youth Fund, and the Fairfield County Foundation's Ambassadors' Fund.

Blue Label/One Write – this fund shall be used for the purpose of benefiting the residents and organizations of Fairfield County.

The Buckeye Lake Region Community Foundation – to provide financial assistance needed by the Buckeye Lake Region Corporation to coordinate, manage and execute initiatives that support the Buckeye Lake 2036 Vision and the Buckeye Lake Region Declaration.

Christian Stewardship – to provide financial assistance for charitable causes, not exclusively, but with emphasis on supporting Christian-based efforts such as evangelism, missionary support, and providing for the needy both within and outside Fairfield County.

Allison Lynn Conover Memorial – to assist families and children from Pickerington, Ohio and surrounding communities.

Donley Family – distributions shall be made primarily to charitable organizations which provide services primarily in the area of Pickerington or Violet Township, Ohio.

Charles and Diana Eversole Family – to provide an ultimate benefit to the people of Fairfield County, Ohio, for public, charitable and educational purposes, with special consideration given to the Fairfield Heritage Association and matching funds to the Fairfield Medical Center Foundation.

Hubie and Jenny Eyman Memorial – to be used for public, charitable and educational purposes to provide an ultimate benefit to the residents of Fairfield County.

Lorelei and David Gibbs Family – to support local charitable organizations.

Great Commission – to support charitable organizations and to further the teachings of Jesus Christ, whether locally, nationally, or worldwide.

The Rotary Club of Lancaster-Sherman Fred & Margie Hatcher Endowment – to support the needs of the Lancaster and Fairfield County community.

Harcum Family – to provide financial assistance for charitable organizations.

Heiber Family – to be used for public, charitable and educational purposes to provide an ultimate benefit to the residents of Fairfield County.

Lloyd F. and Diann L. Helber – to support charitable organizations.

Tina Rose B. Herrmann and Kody Alexander Maynard Healing Hearts Memorial – to provide grants and assistance to help victims of violent crimes.

Jackson Family – to provide charitable programs which will aid the children and aged of Fairfield County and Bloom Township.

David L. Johns – to be used for public, charitable and educational purposes for Fairfield County.

Jennie L. Johns – to be used for public, charitable and educational purposes to provide an ultimate benefit for the people of Amanda, Ohio.

Matthew Jones – to make grants to charitable organizations for charitable purposes.

Robert C. Kalish Memorial Youth Park Program – to provide funds for a summer youth camp program for fourth and fifth graders attending Liberty Union-Thurston School District, for those who reside in the school district, at no charge to the child.

The Magpie Fund - Maggie Grace Lyons Memorial – to provide scholarships to Fairfield County students (up to age 21) whose siblings have special needs and/or have severe medical issues. Scholarships can pay for college, camps, classes (i.e. art, music, etc.).

Jayne and Jim McGill Family – to be used for public, charitable and educational purposes to provide an ultimate benefit to the children in Fairfield County, Ohio.

Terry A. McGhee/Sally J. Grimm Community – to be used for public, charitable and educational purposes.

Toni L. McKinney Memorial – to benefit selected local and national charities and the residents and non-profit organizations in Central Ohio.

Kent and Judy Miller Charitable – to support charitable organizations for charitable purposes.

Mowry Family – for public, charitable, and educational purposes to provide an ultimate benefit to the people of Fairfield Co

Joan and Melvin Moore – for public, charitable, and educational purposes to benefit the residents of Fairfield County.

Ninety One: One Foundation – for the purpose of benefiting the residents and organizations of Fairfield County.

Norman Family Memorial – for public, charitable and educational purposes to provide an ultimate benefit to the people of Fairfield County.

Joe Ogilvie – to benefit Duke University, The Inner City Educational Foundation, and grants for educational endeavors in Fairfield County and elsewhere.

Lauryn “Lu” Oliphant Memorial – to provide grants to benefit the residents of Fairfield County or those organizations supported by the Donors and/or to award scholarships to students graduating from Pickerington High School, Pickerington, Ohio.

William L. and Jo Ellen Parker Charitable – to provide funds to charitable organizations for charitable purposes.

Pickering Family – to provide funds for charitable purposes in Fairfield County.

Rodenbaugh Family Advised – to provide funds for charitable and educational purposes.

Wayne Roller Memorial – to provide support for grants and scholarships for students, athletes, coaches, teams and officials.

Wanda Shaner Memorial – to provide grants and/or scholarships to benefit the residents in Fairfield County.

Brian Stoner Memorial – to provide funds to charitable organizations that are eligible to receive distributions. Preference for grants goes to organizations dealing with individuals with special needs. Preference for scholarships goes to individuals with autism, individuals with other special needs, individuals intending to major in special education, and individuals attending culinary school.

Rich & Delores Troup Family – to provide funds for charitable purposes in Fairfield County.

Vonnie Cares Community Impact – to provide grants to Fairfield County High School students who have a GPA of 3.0 or higher for the purpose of funding a community project to strengthen community relations, to encourage giving and recognize the kindness of others.

John and Jamie Weaver – to make grants to charitable organizations for the purpose of benefiting the residents of Fairfield County and other charitable causes.

The Weiffenbach Family – to make grants to charitable organizations for charitable purposes.

Williamson Family – to provide funds for charitable purposes.

Scholarship Funds

Scholarship funds help students pursue their academic goals. The donor may define the guidelines for the recipient, the advisory committee, the school and the award itself.

Matthew Acton – to provide scholarships for senior golf athletes of any Fairfield County High School, Canal Winchester High School, Circleville High School, Logan Elm High School or Teays Valley High School. This scholarship is for any accredited college or vocational school.

The Anderson/Black/Community (ABC) Mini-Scholarship – to provide scholarships to two Bloom Carroll High School students, staff members, administrators, or retired staff members who had five years of service to the Bloom-Carroll Local School District to fund a Christian Mission Trip (CMT) or a Christian Mission Project (CMP).

Roger Anderson – for students residing in Jackson Township of Perry County and majoring in education or business.

The Aranda Notre Dame Law School – to provide scholarships to students who have been accepted to the Notre Dame Law School.

James L. Barrett, M.D. – to provide scholarship assistance to graduates of a Fairfield County High Schools to attend the University of Cincinnati and major in computer science, geology, physics, chemistry, or mathematics.

Bashore College Trust Fund Scholarship – to provide scholarships for Richland Township residents.

Paul D. Beck – to provide scholarships for graduates of a Fairfield County, Ohio high school who demonstrate academic ability and maintain a 3.5 GPA in high school and a 3.0 GPA in any undergraduate program.

Bloom-Carroll Alumni Scholar Athlete – for Bloom-Carroll graduates who participate in sports and also demonstrate academic excellence.

William W. Bolsen Memorial – to provide scholarships for graduates of the Ohio State School for the Blind who wish to work toward a degree from a technical, two-year or four-year college.

GRANT SPOTLIGHTS



SOZO PEDIATRICS

Sozo Pediatrics, which houses an outpatient clinic in the Connexion West Community Center, recently received a grant from the Patricia A. Beam Fund for their Dream BIG Workshop. The eight-week workshop, designed for anyone 16 and over in the community, is led by Dr. Glen McGillivray and helps participants develop a framework for accomplishing goals that beforehand seemed unattainable. Simply put, they conceive a dream, design a plan and take action to complete a BIG goal.

The grant was utilized to create the foundation for this exciting workshop through the provision of instructional materials and funds to help complete specific goals. To date, two workshops have been completed and the goals participants have pursued is inspiring! Several participants have accomplished a goal of publishing a book, a youth peer-to-peer platform for entrepreneurship was launched, one participant has taken steps towards becoming an ordained minister to help incarcerated individuals, a homeless youth secured an apartment with a goal of sharing his success with others, and the group participated in a global freedom summit against human trafficking with people from every state and over 70 different countries!

“We are incredibly grateful to the Foundation for their flexibility and support of this unique project,” said Dr. McGillivray, project leader and COO of Sozo Pediatrics.

“One of my favorite parts of the workshop is that the completed projects are laying the foundation for the doing of more good things. We welcome anyone who would like to help people achieve BIG goals!”



Marlowe Brainard – to provide a scholarship for students graduating from Millersport High School who desire to continue their education in the field of Arts or Education.

Jean M. Burdette Memorial – for Lancaster High School graduates for study in the field of Special Education.

Glenn R. Burns Dental Education – for residents of Fairfield County who are seeking a degree in Dentistry, Dental Hygiene, or as an Expanded Function Dental Auxiliary.

James Caple – to provide scholarships for post-secondary studies for Fairfield County residents who pursue a course of study in classical vocal or instrumental performance.

Robert E. & Marion A. Carr – for Fairfield County residents who are pursuing a degree in the study of Nursing and/or Teaching/Education.

Molly Ann Clark Memorial – for the purpose of providing educational scholarships for students between the ages of 17-21 who are from Fairfield, Perry, Pickaway, Hocking, Licking, Athens or Muskingum county. They must demonstrate an interest in community service and volunteerism; be a past participant (racer) of the Lancaster Soap Box Derby, past Derby queen or have had a family member who either volunteered or served on the board of directors of the Lancaster Soap Box Derby. Applicants meeting the above criteria will be given preference in determining recipients, or a student seeking a degree in substance abuse education may be accepted every even year.

Charles C. & Barbara Claypool – for students seeking educational opportunities in technical fields with a preference toward engineering. Preference given to the children of employees of Claypool Electric Inc. and students planning to attend Ohio Northern University.

R. Brian Cline – to provide scholarships to Fairfield County residents seeking a degree in Engineering from a state-supported school in Ohio.

Deputy Ethan Collins – to provide scholarships for Fairfield County students to attend an accredited school or academy in preparation for a career in Law Enforcement or continuing education in Law Enforcement.

Coney Memorial – for Fairfield Union High School graduates.

Susie McMackin Crook – will be awarded to a student who has registered and been accepted at Lancaster Montessori School.

D.A.R.E. – scholarship recipient shall be a graduating senior from Lancaster High School, William V. Fisher Catholic High School or Fairfield Christian Academy and a graduate of the D.A.R.E. Program who desires to continue his or her education.

Davidson-J.C. Community Service – to provide scholarships to students of Fairfield County who demonstrate an interest in community service through volunteerism. Jaycees and relatives of current or former Jaycees will be given preference in determining recipients.

Jillian Davidson Memorial – this fund was established by family and friends to honor the memory of Jillian Leigh Davidson who died of a rare blood disease in September 2000. This scholarship is awarded to a female senior basketball or volleyball athlete at Lancaster High School. This award is given to the individual selected by the Davidson Scholarship Committee.

Elsie R. McClelland Davis Memorial – for graduates of Amanda-Clearcreek High School.

Jim DePietro – for the purpose of providing educational scholarships for college students in the manner described: 1. Applicant must be a high school senior and a Lancaster Y Swim Team (LYST) swimmer. 2. LYST swimmer must have been a participant of the LYST program for at least two years, prior to application. 3. Seniors wishing to apply will be asked to write an essay, using an essay prompt determined by the (active) LYST Parent Board Committee.

Frank Dillard Memorial/Standing Stone National Bank – for graduates of Fairfield County High Schools. Preference given to biological or legally adopted dependents of Standing Stone National Bank employees. Weighted toward those who plan to major in Business/Finance at Ohio University Lancaster.

Charles E. Dupler – to provide financial assistance to Fairfield Union High School music and F.F.A. students.

Chad Edwards Memorial – to provide scholarships for Fairfield County students to attend an accredited school or academy in preparation for a career in law enforcement or to further their career in law enforcement.

Leroy and Bernice Ellinger Memorial – for any graduate of a Fairfield County high school or any graduate from a high school in Worthington, Ohio. Preference will be given to a graduate of Lancaster High School. Applicant must be a college junior or senior and preference given to an accredited four-year college. Recipient must have at least a 2.75 GPA going into their junior year.

Fairfield County Educational Service Center Superintendent's Scholarship – for students within Fairfield County based on academic and athletic achievement.

Fairfield County Medical Alliance Healthcare – for current residents of Fairfield County, graduates of Fairfield County high schools, or individuals employed in Fairfield County who are committed to pursuing a nursing career.

Fairfield Federal Ron Keaton – to provide scholarships for Lancaster High School senior varsity girls basketball players.

Amelia Fickel - Glenn Moodie – to provide scholarships for graduates of Perry-Southern Local School District. Special consideration given to graduates who are residents of the former New Straitsville School District. Selection shall be based on financial need. May be awarded for a four-year or two-year vocational or technical college education.

George and Marilyn Finnen Education – to provide scholarships for Lancaster High School graduates majoring in the field of Education. This fund was established by a gift from George Finnen in memory of his wife Marilyn.

Wilfred and Una Fosnaugh – for residents of Fairfield County, Ohio pursuing a bachelor degree in Education at any accredited educational institution and is need based.

Foundation "45" – for graduating seniors of Logan High School who are in a college preparation program and will attend a two-year or four-year college/university program. It is in memory of Corey Kissling and Mark Potter.

Lynn and Lynda Freisner – to award a scholarship annually to any student, Freshman through Graduate level, but only awarded for a single year for each student. Recipient must be a resident of Rushcreek Township or a member of Bremen Bethel Presbyterian Church (BBPC). In addition, recipient must be attending either The Ohio State University or Ohio University.

Lorelei Owen Gibbs – for residents of Fairfield County pursuing a university degree in Elementary education or Nursing.

Patricia Woodyard Gilmore Memorial – to provide educational scholarships for students who have graduated from a high school in Fairfield County and plan to attend a 4-year college or trade school program in Ohio.

The Jack Greathouse Gale Force Basketball – to provide educational scholarships for Lancaster High School seniors who were boy's basketball players.

O.J. Green Memorial – to be used to provide scholarships to the most inspirational senior football player and to one senior Art student at Canal Winchester High School.

Robert V. Grilli Memorial – to provide a scholarship for graduates of Lancaster High School and Fisher Catholic High School who desire to continue their education in a collegiate and/or graduate institution.

Jacob Guisinger Memorial – to provide scholarships for graduates of Berne Union High School. The recipient will be determined on the basis of academic merit, economic need, athletics, and community involvement and must be seeking advanced education at any accredited educational institution.

Nils Gustavson Scholar Athlete – for the purpose of providing educational scholarships for a graduating senior of Lancaster High School with good academic standing and qualities of a scholar athlete. Student must attend an Ohio school.

J. Jay Hampson – for students residing in Fairfield County and attending Ohio Northern University.

FUNDS

Paul E. Harper Memorial – for scholarships for Harper Operating Company employees, children of employees, and grandchildren of employees or to purchase 4-H animals from students at local fairs.

Doug Henwood Memorial – to provide scholarships to Lancaster High School graduates who participate in Track and Field and may be involved in Track and Field at the collegiate level.

William D. Hilyard Family – to be used to reward the outstanding senior music student of Fairfield Union High School. The award shall be known as the “Robert Trocchia Outstanding Music Student Award” given by the Family of William D. Hilyard.

Hocking Valley Dental Society – to provide scholarships for students in Dental Hygiene or Expanded Function Dental Assisting. Students must be a graduate of a high school within the counties served by the Hocking Valley Dental Society (HVDS), Fairfield, Perry, Hocking and Athens, or a resident of one of these counties, or, an employee of a dentist in the HVDS.

Billy J. Holbrook Memorial – for a graduating senior of Liberty Union High School.

Home School – for the purpose of providing educational scholarships for home-schooled students applying to attend a 2 or 4-year college.

Henry and Eleanor Hood – to provide scholarship(s) to Fairfield County residents who are graduates of Lancaster High School, have completed the LHS STEM program, have been admitted to an accredited 4-year college or university with the intent to major in Engineering or Bio Medical Sciences.

Joseph and P.J. Hoover Family Trust – this fund is for the purpose of providing an educational scholarship for graduates of Fairfield Union High School for the study of art education or early childhood education.

Larry L. Hoover Memorial – to provide scholarships to college juniors or seniors majoring in Agriculture or a field related to Agriculture.

Hutton Family – for the purpose of providing educational scholarships for the study of Nursing. The recipient shall be entering at least his or her Junior or Senior (year) in college and shall be a resident of Fairfield County.

Johns Family – for graduates of Amanda-Clearcreek High School.

Trevor and Violet Jones Memorial – for graduates of Millersport High School.

The Carolyn L. Joos Memorial – for an academic scholarship for Fisher Catholic High School students.

Corey Kissling Memorial – for graduating seniors of Logan High School who are in a college preparation program and will attend a two-year or four-year college/university program.

Robert Knisley Fire Service – for graduates of a Fairfield County high school who want to pursue a career in the fire service and are attending a college pursuing a fire science degree or a vocational school pursuing a state of Ohio certification in a fire or EMS field. Children of present/former Lancaster Fire Department members will be given preference and can be graduates of any high school.

Kenny Kosch Memorial – for graduates of Liberty Union School District who are seeking a degree or certificate from a trade school.

Keith A. Kumlner Vocational – for Fairfield County students to attend an accredited vocational or technical school for study in the automotive field.

Lancaster Boys Soccer Booster Club – for providing scholarships to deserving Lancaster High School boys’ soccer seniors.

Lancaster Camp Ground Quality of Life – for the purpose of improving the quality of life for residents living on the Lancaster Camp Ground. The fund will offer assistance and help to defray costs in the following areas: Youth camps such as, but not limited to, church, 4-H, Boy and Girl Scouts, spiritual retreats, mission work, family camps, and life enrichment experiences for seniors 55 and older.

Lancaster Community Chorus – to provide scholarships for students majoring in Music Education, Music Therapy, or Music Performance. Students must be graduates of schools in Fairfield County or counties contiguous to Fairfield County and must have achieved at least sophomore status at their universities and maintained a 2.5 GPA.

Lancaster-Fairfield Chamber of Commerce – for students graduating from a Fairfield County high school intending a career in business.

Lancaster High School Band Boosters – for students graduating from Lancaster High School who have been members of the Lancaster High School Instrumental Music Program for at least three years.

Lancaster High School Class of 1957 Memorial – to provide educational scholarships for Lancaster High School graduates. Recipient must be currently enrolled in or have been accepted into a program leading to a bachelor or associate degree, demonstrate potential for high school or post high academic achievement and show financial need.

Lancaster High School Class of 1959 – this scholarship is for a senior graduate of Lancaster High School. Recipient must not be a recipient of any other scholarship and must be attending a post-secondary education program and/or a traditional four-year college. This could include: community college, liberal arts college, universities, vocational schools, trade schools, institutes of technology or professional schools. Recipient must be a student who, in the committee’s opinion, deserves assistance, even though they have not qualified for other scholarships, and the recipient should be involved in school and community activities.

Lancaster High School Class of 1964 – to provide an educational scholarship for a graduating senior of Lancaster High School. Recipient must not be a recipient of any other scholarship at the time of application. Recipient must be attending any post-secondary education program and/or a traditional four-year college. This could include: community college, liberal arts college, universities, vocational schools, trade schools, institutes of technology or professional schools. Recipient must be a student who, in the committee’s opinion, deserves assistance, even though they haven’t qualified for other scholarships. Recipient should be involved in school and community activities.

Lancaster Junior Women’s Club – for the purpose of providing educational scholarships to support females who attend a high school, or who are home schooled, in Lancaster and are entering their freshman year in an undergraduate college or university program. Recipients must volunteer in their community for a certified 501(c)3 organization for a minimum 20 hours in the prior 12 months from submitting the application and must have a cumulative GPA of 3.5 or higher on a 4.0 scale.

Lancaster Kiwanis Club – for students graduating from a high school located in Fairfield County, Ohio.

Erik J. Landis Memorial – to provide scholarships for graduating seniors from Fairfield Union High School who will be attending an accredited educational institution. Recipients will be chosen based on academic merit, economic need, and community involvement.

Jamey Landis Memorial – to provide scholarships to Fairfield County high school seniors who participated in track, cross country, or FFA.

Malinda Lifer – for recent graduates of Bloom-Carroll High School or Lancaster High School who plan to major in elementary education at Ohio University Lancaster.

Liberty Union Alumni Association – to provide scholarships for Liberty Union High School graduates.

Frank P. Maguire – to provide scholarships to students who graduate from a high school in Fairfield County, Ohio whose parent(s) served or are serving in the U.S. military.

Officer Brett Markwood – to provide scholarships for Fairfield County students to attend a police academy, a technical school for law enforcement training, or a four-year college in a law enforcement-related field.

V. Ben Martin – for graduates of a Fairfield County high school who have been accepted to the Fisher College of Business at The Ohio State University.

Clark M. McGhee and Carol T. McGhee – for students who are residents of Rushcreek Township for at least 12 months; or are, or will be, graduates of Fairfield Union High School, or have been residents of Fairfield County for at least 12 months.

THE LIGHTHOUSE

WHY I WORK WITH THE FOUNDATION

Susan Nixon-Stoughton, Executive Director
The Lighthouse Domestic Violence Shelter



Why did you choose to set up a fund for The Lighthouse through the Foundation?

The Foundation regularly connects donors in a way that is meaningful to the donor and to the community. The Lighthouse as an agency may not be understood to potential donors as a project worth considering simply by our name and the nature of what we do. By establishing the fund through the Foundation, staff can facilitate donors getting to know more about us and the impact their support can make to victims of domestic violence.

What would you tell other non-profits about your experience and the value of having a fund at the Foundation?

The Lighthouse Fund at the Fairfield County Foundation grew 35% two months after establishing it thanks to the 31-Hour Give! You cannot get that kind of a return anywhere. I would encourage any non-profit that does not currently have a fund to make it a priority to do so as soon as possible and to reference the fund as a part of a long-term fund-raising strategy.

How did you find the process of setting up a fund to be?

Working with Amy made starting our fund simple, fast and easy!

How has your involvement with the Foundation served as a benefit to you and the individuals The Lighthouse serves?

The Fairfield County Foundation has been an incredible resource to our survivors, improving their quality of life while in shelter, by funding many items, including: new bedframes and mattresses, kitchen tables and chairs, professional-quality refrigerators and freezer and, most recently, the Youth Advisory Committee agreed to fund a swing set for our youngest clients, just to name a few.

What do you hope your investment does? Generally and specifically through the fund?

Being able to have this endowment supplements our resources by providing an ongoing source of income. It is an invested pool of money that provides an income in perpetuity, something The Lighthouse can count on to grow over time.

What is your favorite thing about the Fairfield County community?

My favorite thing about our community is that it is filled with agencies and providers that have access to beneficial resources and everyone works together to deliver support to our neighbors in need every single day. In larger counties/communities, it is often times much harder to know the resources and decision-makers necessary to solve problems. Fairfield County is streamlined with tighter resource relationships and less bureaucracy to solve problems and provide improved outcomes.



FUNDS

Randy E. Miller – to provide financial assistance to Pickaway/Fairfield County students pursuing EMT/Firefighters degree/training or a degree in music education.

Ruth E. Miller – for the purposes of providing an opportunity for a college and university education for persons from Lancaster and Fairfield County whose financial condition is such that they would not otherwise be able to procure a college or university education without the scholarship. Where possible, preference should be given to those applicants who have demonstrated the qualities of hard work, scholastic attainment, Christian moral values, and love of family and country.

John Morrow Music Booster (Pickerington Music Boosters) – for Pickerington High School graduating seniors who were members of the music program.

Mt. Pleasant Kiwanis – for the purpose of providing educational scholarships for graduates of Fairfield County high schools or for residents of Fairfield County who graduate from high schools outside the county who plan to attend an institution accredited by the North Central Association or Commission on Accreditation and School Improvement.

Elizabeth “Libby” Murry – scholarship recipient shall be a graduating senior or graduate of Jonathan Alder High School, Plain City, Ohio. The recipient shall pursue a degree in the study of Education and/or excel in the field of science. Awards may be made for any four-year or two-year accredited college.

Jaakko Naayers Award – for graduating seniors of Fairfield Christian Academy who have shown strong Christian character, academic and athletic excellence, and have been either accepted to a college or university or will be participating in a mission of at least thirty days.

The Tammy Nusser Foundation – to support those individuals who have cancer, or their children, by awarding educational scholarships to help offset the cost of college expenses.

Roger Pedigo Memorial – for the purpose of providing educational scholarships for selected high school graduating seniors attending Ohio University who have at least a 3.0 GPA, leadership skills, and community service and are from Athens, Hocking, Vinton, Fairfield and

Franklin counties. Special favor will be given to applicants whose families will exhibit financial hardship through the funding of their child’s furthering education.

William D. Queen – to benefit students from Fairfield Union. Special consideration is given to candidates majoring in math or computer sciences.

LaVerne Raab – for graduates of Fairfield County high schools for undergraduate tuition.

Stori Huston Raver – to provide a scholarship for a graduating special education senior from Fairfield Union High School. The scholarship may be used for a two-year or four-year college, vocational school, technical school, apprenticeship or for support upon entering the work force.

Gladys M. Reber – to provide educational scholarships for students who have been involved with the Maple Street United Methodist Church.

Kathleen Kaser Ridenour Memorial – to be used for the purpose of providing scholarships to Perry county residents. Applicants must be 9th grade students at the Sheridan Middle School with career interests in becoming a teacher. The scholarship will be awarded once the student graduates from high school and is enrolled in college.

Kathleen K. Ridenour Memorial – for the purpose of providing educational scholarships for Sheridan High School seniors with a 2.2 or higher GPA., who have obtained a letter of recommendation from a Sheridan High School teacher, and have completed the application fully.

Robert Rowles Family – to provide educational scholarships for students who are residents of Fairfield County, who are graduates of Fairfield Union High School, are enrolled in a post-secondary program, and have a financial need which might keep them from otherwise attending college.

The Rushcreek Grange – to provide scholarships for graduates of Fairfield County high schools who are residents of Rushcreek Township for at least 12 months prior to application. The recipient must be alcohol, tobacco and drug free. May be awarded for any four-year, two-year or technical college.

S+W Foundation – for students pursuing a degree or certificate in an environmental, science-related field.

Mollee J. Seifert – for graduating seniors from Fisher Catholic and Lancaster High Schools seeking advanced education at an accredited institution.

Shaner-Wohrer Memorial – to provide college scholarships to graduating senior girls’ volleyball students from Lancaster High School, in Fairfield County.

Shannon Family – scholarships to Ohio University Athens and Ohio University Lancaster for graduates of Lancaster High School. Priorities given to students whose parents are deceased, single-parent families and low-income families.

Tyler C. Sharpe Memorial – to provide a scholarship to a graduating senior within the Muskingum Valley League (MVL) residents who will be pursuing a university degree. Recipient must compete on his or her high school Cross Country team and display academic excellence.

Jack and Elsie Smith – for Fairfield Union graduates with special consideration given to residents of the former Pleasantville School District.

Sophie Strong – to provide scholarships to female, graduating seniors who were members of the Amanda Clearcreek girls’ softball team in good academic standing and to female graduating seniors of other Fairfield County, Ohio high schools who were also members of their high school’s softball team in good academic standing.

Russell N. & Clarice H. Stemen – to provide scholarships for post-high school students who were members of the Calvary United Methodist Church or the Bremen Bethel Presbyterian Church of Bremen, Ohio for at least three years preceding their senior year in high school. Selection shall be based on financial need. May be awarded for a four-year, two-year vocational or technical college education.

Dr. Thomas E. Stenger – for the purpose of providing educational scholarships for graduates of William V. Fisher High School. Preference is given to students pursuing a degree in the health care field and to students with good academic standing.

Ryan Stoneburner Memorial – to provide a scholarship(s) to Amanda- Clearcreek graduates pursuing a university degree in Physical Therapy.

Steven E. Svoboda – to provide educational scholarships for students pursuing a degree in the field of technology with special consideration given to students studying Engineering or Auto Mechanics.

Hannah E. Thrash – to provide scholarships to enhance excellence in music with an emphasis on voice. Eligible applicants must be a resident of Fairfield County and should have exhibited a preference for and an interest in vocal music by the applicant’s high school activities.

Andrew “Drew” Townsend-Engle Memorial – to provide scholarships for senior choir students at Lancaster High School who have a passion for singing and performing and intend to major in Music.

Kenneth D. & Zita M. Trimmer – 25 percent of this scholarship will help students from Fisher Catholic High School pursue a Bachelor’s or Associates’ degree in nursing in an approved nursing program. The remaining 75 percent will be used for graduates of Fisher Catholic High School or Lancaster High School to pursue a Bachelor’s degree from any approved college or university in Business Administration or a Master’s program in Business Administration from Harvard University.

Wilbur O. Turner and Anita M. Turner and Mildred L. Hatter and Frank H. Hatter – for scholarships and tuition assistance for graduates of Lancaster High School who attend seminary school or pursue a career in the medical profession.

Violet Grange #1949 – for students graduating from the Pickerington Local School District or any student who lives in the Pickerington Local School District but attends high school for the purpose of enrolling in a Vocational Agricultural program which is not available in the Pickerington schools.

D. Eugene Ward Memorial – for scholarships for Fairfield Christian Academy seniors who are in the college preparation program who will attend a two or four year College/University program. Students will be chosen based on academic merit, high motivation, hard work, Christian moral values, love of family and country, and their contributions to their school and community.

Dr. Martha Gesling Weber – for Fairfield County high school graduates. Preference given to students enrolling at Bowling Green State University majoring in education with emphasis on course work leading to certification as a reading specialist.

Weis Family – for Fairfield County residents who are or will be graduates of high schools in Fairfield County and will be or are attending Ohio University Lancaster for their first two years of college.

Chad Welch Memorial – for Liberty Union students who have excelled in athletics and academics.

Bill and Dorothy Wharton – scholarships for students graduating from Fairfield Union High School who will be attending a university in Ohio. Recipients will be chosen based on academic merit, character, personality, leadership potential, and financial need.

Chris White Memorial – for scholarships for graduates of Millersport High School.

Charles T. Wilkins – for scholarships for residents of city of Lancaster or Fairfield County.

Colonel Robert G. Wilkins Memorial – to provide a scholarship fund that will promote and encourage young adults to pursue a career in the field of aviation.

Edgar Work – for scholarships for students of Fairfield County. Special consideration will be given to those students who will be attending the School of Engineering at Purdue University.

Rotary Scholarship Funds

In 1992, the Lancaster Rotary Club turned over the investment and administrative responsibility of the Rotary Scholarship Funds to the Fairfield County Foundation. The Lancaster Rotary Club is responsible for setting policy and maintains the selection process for the various Rotary scholarships.

David Boger Memorial – for Lancaster High School graduates majoring in Elementary, Secondary, or Special Education.

Joseph A. Calandra Memorial – for Fairfield County students who are attending Ohio University-Lancaster.

Eva G. Eyman – for Fairfield County graduates planning to attend an Ohio University campus for undergraduate studies. Preference is given to families who show financial need and awards for post-graduate study outside the state of Ohio will be considered.

Bess H. Floyd Cultural Arts – for Fairfield County residents who were active in the cultural arts through their high school activities and are majoring in the Arts.

Bess H. Floyd Music – for Fairfield County residents who exhibit an interest in music through their high school activities and are majoring in Music Vocal, Music Vocal Classical, or Music Instrumental Performance.

Dr. Phil Floyd Dentistry – for Fairfield County graduates going into the field of dentistry, including dental hygiene.

Jerry Floyd Memorial – for Fairfield County residents majoring in Architecture, Landscape Design or Interior Design.

Fannie M. Howe Nursing – for graduates of a Fairfield County, Ohio high school pursuing a career in Nursing.

Lancaster Rotary Club – for students graduating from a Fairfield County, Ohio high school.

Dr. Paul & Mary Magnuson – for Fairfield County graduates pursuing a professional degree in the field of Medicine, Dentistry, Optometry or Nursing.

Nauman Sampson Wittenberg – for students who have graduated from a high school in Fairfield County and are, or will be, attending Wittenberg University.

Rodenbaugh Family – to provide funds for engineering scholarships.

George A. Sakas Memorial – for engineering scholarships for graduates of Fairfield and Perry counties. Preference given to biological or legally adopted dependents of Sakas, Inc., employees and for those who plan to attend a school in Ohio.

Jacob Sims – for high school seniors who plan to attend Ohio University Lancaster their freshman year and are residents of Fairfield County and will be graduates of a Fairfield County Ohio high school.

Willard “Fuzz” Smith – for scholarships for Fairfield County graduates attending Ohio University-Lancaster. For the non-traditional student who may have attended college and dropped out or for the mature student who now realizes that they need post-high school education to succeed in life.

Clarence & Edna Steenrod – for scholarships for Fairfield County residents pursuing a course of study leading to a Doctor of Optometry degree.

Shelly Strigle Memorial – for scholarships to partially cover tuition to attend Fisher Catholic High School.

James & Viola Wayland – for scholarships for Fairfield County residents pursuing degrees in Accounting, computer-related fields, or an undergraduate area of choice.

Mindi Wendel Memorial Visual Arts – to provide scholarships for students who are or will be graduating from a Fairfield County high school and who have demonstrated an interest in visual art through their high school activities.

Unrestricted Funds

This type of fund offers the broadest giving option. Establish a permanent fund as an unrestricted fund during your lifetime or through your will. All grants will be made in the name you give your fund, and the Fairfield County Foundation's professional staff and Board of Trustees assume the entire responsibility for selecting the most appropriate recipients. Grants may be made in any of the Foundation's major areas of philanthropy.

Fairfield County Foundation Ambassadors' Club – supports the Foundation's role, and its members increase the Foundation's visibility in the community.

Fairfield County Foundation Community Impact – to enable the Foundation to respond to changing community needs, support innovative solutions to community problems, and enhance the quality of life in Fairfield County.

James H. Bowen – to benefit the residents of Fairfield County.

Memorial – contributions to the Fairfield County Foundation in memory of friends and family are allocated and used at the discretion of the Board of Trustees for grants to the community.

Jerry and Janet Nauman Foundation Fund – to support the continuing needs of Fairfield County.

Robert A. Schatz – to provide support for community needs in Lancaster and Fairfield County.

Wendel Family – to be used for the benefit of the residents of Fairfield County for cultural and civic projects.

George and Dollie L. Zimpfer Memorial – to provide support for continuing needs in the Lancaster and Fairfield County community.

GRANT SPOTLIGHTS



PINK RIBBON GIRLS

Pink Ribbon Girls is a multi-state organization with a Central Ohio chapter, which proudly provides personalized support and services to breast and gynecological cancer patients throughout all stages of their journey, regardless of age, stage or socio-economic status, and free of charge. The organization helps to make the burden of cancer lighter by providing free, healthy meals, housecleaning, rides to treatment and other peer support services to clients. Instead of being alone to navigate through challenges of daily life, clients helped by Pink Ribbon Girls can focus on healing and their families.

The Central Ohio chapter recently received a grant from the George and Dollie Zimpfer Fund to support their initiatives right here in the Fairfield County community. With the funding, Pink Ribbon Girls was able to serve eight local residents and their families by providing 792 meals, 78 rides to treatment and eight housecleaning services. This impact rippled out to a total of 18 adults and four children.

“Funding from the Zimpfer Memorial Fund at the Fairfield County Foundation made a significant impact on local breast and gynecological patients and their families,” said Julie Frazee, Director of Finance. “Thank you, Zimpfer Memorial Fund, for providing so much hope to Pink Ribbon Girls’ clients in Fairfield County who are struggling to make ends meet while fighting cancer during the pandemic.”



Field of Interest Funds

Set up a field of interest fund, describing the field as broadly or as narrowly as you wish. The more broadly you define your field of interest, the more flexible your gift will be.

The Access to Justice – to support projects that will initiate, increase, or improve direct services intended to meet the civil legal needs of indigent persons residing in Fairfield County, Ohio, giving preference to projects proposed by Ohio State Legal Services.

Amanda Clearcreek Education Support Foundation – to fund projects and programs that will contribute to the achievement of the Amanda Clearcreek Education Support Committee’s mission of seeking to build and manage an education fund through community support for Amanda-Clearcreek.

Amy’s Army – to provide assistance for local families touched by cancer.

B More Foundation – to benefit the residents of Baltimore, Ohio and surrounding areas.

B More Foundation Unrestricted Fund – to benefit the residents of Baltimore, Ohio and surrounding areas.

Hunter James Barber Memorial – to provide funds for pediatrics training and/or pediatric equipment for the Fire and EMS Departments in Fairfield County and Franklin County.

Alaina Boggs Memorial – the purpose of the fund is to provide financial support to children and their families dealing with long-term illness and serious medical needs.

Brain Tumor Charities of Central Ohio – to provide funding for research for the cause and cure of brain tumors, as well as provide assistance for brain tumor survivors.

Alma S. Busby – to benefit elderly women and other senior citizens in the community.

Ann Chess – for the benefit of the residents of Fairfield County, Ohio with special consideration given to supporting the performing arts through organizations that

support the arts, especially as expressed in music, theater, dance, art, and textiles; music programming, equipment, and education throughout Fairfield County schools; scholarships to students graduating from a high school in Fairfield County, to study a major or minor in music, arts or theater, with special consideration to Wittenberg University applicants, Ann’s alma mater; the Decorative Arts Center of Ohio; Ohio University Lancaster Theater; and the Lighthouse Women’s Shelter.

A. A. Clark Pet Overpopulation – to provide a fund that will provide for a spay/neuter clinic for cats and dogs.

Community Love – to provide assistance to families in the Liberty Union-Thurston School District that are burdened by extraordinary costs and emotional stress due to a serious medical condition.

Tyrone Conrad Memorial – provides assistance to needy children of Fairfield County and an award for an elementary special education student and a secondary special education student in Lancaster City Schools, including Lancaster City School students attending the Crossroads Center for Youth.

Janet S. Crist Memorial – to support funding for professional performing arts or other cultural/educational purposes.

George and Pam Daft – for public, charitable, and educational purposes to benefit the people of Fairfield County.

Davidson-J.C. Community Service – to assist non-profit, community service-related organizations in meeting the needs of Fairfield County residents.

Fairfield County Diversity, Inclusion and Empowerment – to provide support for the purpose of fostering conversation, collaboration, and action to drive positive change in Fairfield County, Ohio.

Fairfield County Health – for support and benefit of hospitals and other health care organizations located in Fairfield County.

Fairfield County TB & Respiratory Disease – for tubercular and respiratory care or a scholarship for respiratory therapist.

Fairfield Riding Club – to benefit the youth of Fairfield County.

FI Client Burial Assistance – for the purpose of providing burial costs/expenses for clients currently serviced by Fairfield Industries.

Friends and Families for Veterans – to support Veterans and their families in Fairfield County, Ohio.

Bud Goodman Memorial Youth – to be used to help with the education and furtherance of the Youth 4-H and FFA programs, with emphasis given to beef exhibitors.

Ward R. & Dorothy Delancy Halteman – to provide funds to assist residents of Fairfield County who are visually impaired, through services rendered by not-for-profit agencies.

David & June Harcum Abuse Prevention – to assist new and more effective efforts in abuse prevention.

Hoyman Family Fine Arts – to support the arts, including painting, poetry, writing, and music for the benefit of the residents of Fairfield County.

Sherry Hubbard Technology – for the purpose of purchasing technology to support and enhance speech, language, hearing and communication skills.

Kiwanis Club of Lancaster Endowment – to benefit charitable organizations as directed by the Kiwanis Fund of Lancaster, Ohio, Board of Directors.

Kiwanis Special – for the benefit of the children of Fairfield County, Ohio.

Phillip A. Laessle & Grace Laessle Urology (Rotary) – to provide equipment and supplies for urological research.

Lancaster Pride – to advocate for the equal treatment and opportunities for all Lancaster residents regardless of their sexual orientation or gender identity or expression.

The Lancaster Public Education Foundation – to improve the learning and academic achievement of all students of the Lancaster City Schools, Lancaster, Ohio; to enhance the leadership and educational capabilities of the

administrators, teachers, and staff of the Lancaster City Schools, Lancaster, Ohio; and advance improvements in the classrooms, schools, and facilities of the Lancaster City Schools, Lancaster, Ohio.

Chloe Metzger – to support residents of Lithopolis, Ohio who do not have the means to pay to provide veterinary care for pets and other animals and to provide comfort animals for senior citizens and others in need of the same.

Gerhard F. Miller Memorial – for the purpose of supporting organizations or causes that serve those with developmental disabilities, such as Forest Rose School, Fairfield Developmental Disabilities, Fairfield Center for disAbilities and Cerebral Palsy and the Sensory Trail, or to benefit individuals attending camp or participating in a field trip.

Michael S. Moyer – to benefit the Fairfield County Humane Society and Animal Rescuer’s Friend.

Naumanator 4 Miler – to better the lives of those in our community who are affected by disabilities.

Pickerington Education Foundation – to enrich, improve and support the total education of students of the Pickerington Local School District, to provide grants to teachers employed by Pickerington Local School District, to grant scholarships to students, to help achieve specific educational goals and purposes established by Pickerington Board of Education, and to enrich the curriculum, instruction, and extra-curricular activities of the Pickerington Local School District.

Public Cemetery – to provide funds for maintenance and upkeep in Fairfield County cemeteries.

The Ryan Reeb – for the purpose of spreading awareness of mental illness, to rid its stigma, and to educate to prevent suicide.

Reed Riegel Memorial – to benefit organizations with a focus on school and sports-related causes and to provide scholarships for students who are active in or have participated in sports-related activities.

Rotary Club of Lancaster – for support of the Lancaster Rotary Club and its service projects for Fairfield County.

FUNDS

Edward N. Sands for Baltimore – to benefit the Museum in Baltimore, the Baltimore Community Chest, and any other charitable, scientific, educational and literary purposes for the community of Baltimore, Ohio.

William J. and Sarah E. Sitterley – for public, charitable, and educational purposes to provide an ultimate benefit to the people of Fairfield County.

Jessie J. Smith Christian Advancement Fund – for the advancement of Christianity, specifically among adolescents in the community.

Kenneth D. Trimmer Endowment – the Kiwanis Club of Lancaster established this fund for the purpose of serving underprivileged children. They are the only entity empowered to authorize disbursements from this fund. All disbursements shall be for the benefit of underprivileged children.

Frances & George Utley Children's – to provide footwear or medicine for children from low-income families.

Fred Van Buren Educational Assistance Project – to enhance the educational opportunities of middle school children in the Liberty Union-Thurston Local School District.

Elza and Christina Wears Barney's – for the protection, health and welfare of dogs and cats, including but not limited to the promotion and or facilitation of pet adoptive services.

Barbara A. Webel Second Chance Animal – to provide a low-cost spay and neutering program and financial assistance to families unable to provide funds to care for their pets in need of medical or surgical treatment.

Women's Giving Circle – to fund programs that support the Women's Giving Circle's mission of investing in hope and opportunity for youth and women in Fairfield County, Ohio.

Designated Funds

Designated funds provide financial support for a specific area or support a specific nonprofit organization.

Dr. Hubert & Pearl Amstutz Memorial - Maywood Mission – for the benefit of the Maywood Mission.

Dr. Hubert & Pearl Amstutz Memorial- Salvation Army – for the purpose of enhancing objectives of the Salvation Army Adult Day Care Center of Lancaster, Ohio.

The Denver and Peggy Anders – to provide support for the Bloom Baptist Church in Lithopolis, Ohio.

Berne Township - Sugar Grove Development Committee – for the purpose of promoting tourism and business within the township with first priority being given to upkeep and maintenance of the caboose.

Bremen Area Historical Society – to provide support to the Bremen Area Historical Society.

Cochran Lighthouse Special Assistance – to be used to benefit the clients of the Lighthouse and their dependents.

Fairfield Heritage Association - Crist Trust – to be used to purchase items for the Georgian or Sherman House.

Fairfield Heritage Association - Kindler Piano – for the maintenance and repair of the Mason & Hamlin Grand Piano.

Fairfield Heritage Trail – for the benefit of the Fairfield Heritage Trail Association.

Fairfield Union Charitable Trust – to support the academic instructional programs of the Fairfield Union School District.

Susan Fowler Memorial – to be used in support of the Lancaster High School Music Department as a memorial to Susan Fowler.

Friends of Michael Davis Memorial – for the purpose of providing annual fellowship positions in the Lancaster Festival Orchestra.

Cyrus L. Fulton Memorial – to enhance and carry on the annual track and field event known as the Fulton Relays for purchase of uniforms, warm-ups, shoes and related items to be used by the Lancaster track team.

Glaab FAHS Spay Neuter – to provide funds to the Fairfield Area Humane Society to provide spay and neutering for FAHS animals.

Helen Hedges and Golda Hedges – supports the First Presbyterian Church through its Education Committee; the Golda Hedges and Esther Hedges Strickland Scholarship in the Endowment Fund of the Alumni Association of Amanda-Clearcreek High School; and the residents of the Village of Amanda and Township of Amanda through educational, cultural and charitable purposes, including promotion of safety and health care through such programs as training for paramedics.

Mary Ann's Art Cart – for crafts and project supplies as requested by the director of the YMCA pre-school program.

Martha Miller – for the purpose of providing scholarships for YMCA gymnasts who have financial hardship or extenuating circumstances.

Grace Ray Moon Memorial Tree – to perpetuate tree planting in public areas of the city of Lancaster.

Mt. Pleasant Lighting Maintenance – for the benefit of maintaining the lighting of Mt. Pleasant in Lancaster, Ohio.

Constance Marshall Norris – for the benefit and humane care and treatment of small animals; for spaying and neutering small animals through the Fairfield County Humane Society; and for scholarships for Fairfield County students studying veterinary medicine or other educational fields specializing in the care and treatment of small animals.

North School – for scholarships to be awarded to former students of North School Elementary and to update and maintain the playground equipment and surrounding grounds at the current North School location.

Pickering House-FAIRHOPE – for the benefit of the Pickering House of FAIRHOPE Hospice.

Pine Grove Host – to benefit Amanda-Clearcreek School District.

Cheryl L. Robinson – to provide financial assistance to the staff and students of Millersport Schools, Walnut Township School District, Millersport, Ohio.

Joseph D. Rockey Cannon – to provide funds for the preservation of the Rockey Cannon.

Jay Scholl Junior Fair Showmanship Awards – to support the Junior Fair Board and the Fairfield County Fair Board by providing income for Junior Fair awards to 4-H or FFA members, with emphasis on beef showmanship.

General William T. Sherman Statue Maintenance – for the upkeep, maintenance, and repair of the General William T. Sherman Statue, lighting, flagpole and plaque.

Dr. Thomas E. Stenger Lancaster Festival – to provide support for the continuation and enhancement of the Lancaster Festival.

Frances and George Utley Georgian – for maintenance of the outside of the Georgian Living History Museum.

Violet Cemetery Association Investment – to provide for the transfer, management, and distribution of funds as may be recommended by the Violet Cemetery Association for the support of the Violet Township Cemetery in Fairfield County, Ohio.

Raymond Wilkes Young Artist Fellowship – for the purpose of providing an annual fellowship in the Lancaster Festival Orchestra to an outstanding young musician in honor of the late Dr. Raymond Wilkes.

Fred, Mary and Silas Wilson Memorial – to support St. Paul's Lutheran Church Cemetery, North Berne, for repair and maintenance of the cemetery; the Salvation Army of Fairfield County; and Public Broadcasting through WOSU and NPR, Columbus, Ohio and WOUB, Athens, Ohio.

Zane Square Parks – to benefit the downtown park area at Main & Broad Streets in Lancaster, Ohio.

GRANT SPOTLIGHTS



EVIE BEAR'S LITTLE LIBRARIES

THE EVELYN HAZEL MILLER FOUNDATION



The Evelyn Hazel Miller Foundation was granted funds from the Janet S. Crist Fund to build, install and supply books for six little free libraries in Fairfield County to be known as "Evie Bear's Little Libraries." The foundation, established in Evelyn's memory by family and friends, was founded to celebrate Evelyn's life by shining her light in support of children, especially through literacy and education.

Evelyn loved books and being read to. Her grandma smiles whenever she recalls her little voice saying "more, more" when one book was complete and she wanted to hear another. To celebrate her love for books and reading, her family has a goal of creating "Evie Bear's Little Libraries" across Fairfield County. Funding would be utilized to support access to free books for children in Pre-K through high school in the Bloom Carroll, Pickerington and Canal Winchester School Districts.

"Each month when we replenish the book selections, it is truly a joy to see the evidence of each library's use," said Penny Miller, Evelyn's grandma. "Evelyn would be so happy to know that others are enjoying books as much as she did. We are so grateful for this grant, which helps us continue to shine Evelyn's light in Fairfield County."



FCF PROFILE

WOMEN'S GIVING CIRCLE

INVESTING IN HOPE AND OPPORTUNITY FOR YOUTH AND WOMEN IN OUR COMMUNITY

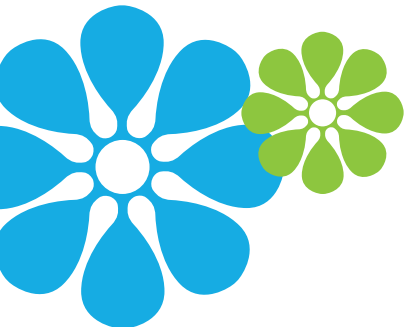
The Women's Giving Circle, a component fund of the Fairfield County Foundation, is a volunteer-led and member-managed giving circle whose main purpose is to connect, invest and inspire hope for youth and women in Fairfield County by awarding grants to local non-profits. No volunteering, no event planning, no silent auction donations to solicit. Through collaboration and relationships developed in the circle, the women create a greater impact than they may otherwise have alone.

The Women's Giving Circle meets three times per year for a one-hour meeting and each member is asked to contribute \$100, making the total annual contribution \$300. These meetings bring women together to learn more about issues impacting women and youth in our community and generate the resources utilized to address the unique needs the group decides to support.

This year, the Women's Giving Circle provided grants to The Fairfield County Community Health Center to kick-off their Pediatric Dentistry Initiative; the Harcum House to support their Canine Companion project; and The Lighthouse for their flooring project.

"The Women's Giving Circle continues to make a difference in Fairfield County," said Sherry Orlando, Volunteer Chair for the Women's Giving Circle. "It is truly a wonderful opportunity to gather together with other philanthropic women and learn about and identify our community's most pressing needs."





WOMEN'S GIVING CIRCLE MEMBERS

Kate Adler
Tracy Arbuckle
Lynn Barboza
Cathy Barrows
Molly Bates
Denise Bauer
Judy Beal
Cathy Bitler
Jennifer Blackstone
Mary Lyle Boone
Elizabeth Brown
Shelley Carter
Kathryn Cheek
Ricki Chenault
Marilyn Clark
Amie Cohen
Cindy Collins
Eileen Competti
Deb Connell
Kathy Connor
Aunie Cordle
Joyce Cox
Suzanne Culver
Judy Custer
Nicole Davis
Chelsea Dearth
Cathie DeRolph
Ann Destadio
Linda Disbennet
Ronnie Dodds
Tammy Drobina
Jennifer Eck
Becky Edwards
Amy Eymann

Liz Fox
Nancy Gallimore
Jill Gilmore
Norah Ginty
Rosemary Hajost
Peggy Hall
June Harcum
Helen Harding
Linda Harris
Sheila Heath
Connie Hendren
Eleanor Hood
Carolyn Hoyt
Krista Humphries
Julie Johns
Susan Johnson
Kelli Kelly
Tracy Kelly
Regina King
Kathy Kittredge
Angela Krile
Laurie Lach
Linda Lally
Lisa Linehan
Jackie Long
Diane Maguire
Peggy Mahler
Susan Marque
Cathy Mets
Joan Miller
Judy Miller
Kim Nauman
Judy Ogilvie
Julie Ogilvie



Sherry Orlando
Kate Smiley-Parker
Keely Pearce
Jodie Phayer
Jodi Ranegar
Debby Rockwood
Judy Root
Jennifer Ruff
Laurel Santino
Kamilla Sigafos
Jennifer Sitterley
Mary K Smiley
Deb Smith
Mary Jo Smith
Mary Snider
Diana Spurgus
Susan Nixon-Stoughton
Diane Stuckey
Amy Swinehart
Nancy Taylor
Anna Tobin
Laura Tussing
Makaila Tussing
Madge Vail
Amy Vandervoort
Terre Vandervoort
Sallie Voyles
Melissa Walker
Penny Wasem
Lisa Wells
Beth Wigton
Carrie Woody
Elizabeth Fox-Zawislak

Organizational Endowment Funds

This type of fund is established by non-profit organizations to provide income to them. We handle all administrative and investment responsibilities, freeing the organization to pursue its charitable mission. The principal is held in perpetuity, and the Foundation will transmit the income in accordance with the agency's specific instructions.

4-H Fairfield County Foundation – shall be used for unrestricted support of the charitable or educational purposes of the Fairfield County 4-H Youth Development Program.

Afterschool Programs – this fund shall be used as a way for individuals to contribute to legacy giving and for support of quality afterschool learning for students in the Lancaster community.

AHA! A Hands-On Adventure Program – to support AHA! A Hands-On Adventure, A Children's Museum.

Patricia A. Beam Endowment – for the benefit of the residents of Fairfield County, Ohio with special consideration given to the following organizations: Lancaster Chorale, Lancaster Festival, Maywood Mission, Robert K. Fox Family Y - Wellness Center and Robert K. Fox Family Y - Wendel Pool.

Big Brothers Big Sisters of Fairfield County Endowment – to benefit Big Brothers Big Sisters of Fairfield County.

Big Brothers Big Sisters Agency – to provide additional operating funds for the agency.

Canal Winchester Area Historical Society Endowment – for support of the Canal Winchester Area Historical Society.

Decorative Arts Center of Ohio Endowment – to carry out DACO's mission, which is to foster knowledge, enjoyment and appreciation of the decorative arts and to celebrate the architecture and heritage of the Reese Peters House by providing programs, exhibitions and arts education for all ages.

Fairfield Area Humane Society Endowment – for the support of the Fairfield Area Humane Society.

Fairfield Christian Academy – to enrich, improve and support the education of students of the Fairfield Christian Academy; to advance improvements in the classrooms, schools, and facilities of the Fairfield Christian Academy; to grant scholarships to students of the Fairfield Christian Academy; and to help achieve specific educational goals and purposes established by the Fairfield Christian Academy School Board.

Fairfield Community Health Center Service – to provide access to patient-centered health care for all.

Fairfield County Fairgrounds Capital Improvement – to benefit the Fairfield County Fairgrounds.

Fairfield County Fairgrounds Christmas Lighting – to benefit the Fairfield County Fairgrounds' activities.

Fairfield County Foundation Endowment – for the purpose of support for the Fairfield County Foundation.

Fairfield County Park District – for general support purposes of the Fairfield County Park District and its affiliated agencies.

Fairfield Heritage Association Operating Endowment – to be used at the direction of the governing board of the Heritage Association.

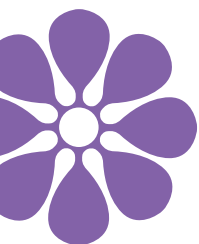
Fairfield Land Preservation Endowment – for general support of the charitable or educational purposes of Fairfield Land Preservation Association and its affiliated agencies.

FAIRHOPE – to provide current income and long-term support for the operation and programs of FAIRHOPE Hospice & Palliative Care, Inc.

FAIRHOPE Hospice & Palliative Care Endowment – for end-of-life care projects.

Fairfield Union Charitable Trust – to support the academic instructional program of the Fairfield Union Schools.

Family Y Endowment – to be used exclusively for the Family Y at the direction of the Family Y Executive Committee.



FUNDS

Family Y Unrestricted – for the benefit of the Family Y of Lancaster, Ohio.

Friends of the Lancaster Parks and Recreation Endowment – for the benefit and support of the charitable or educational purposes of Lancaster Parks and Recreation and its affiliated agencies.

Good Neighbors in the Village Endowment and Program – to provide resources for projects and programs that allow the organization to respond to the needs of persons in northern Fairfield County who are marginalized by age, medical condition, disability, food insecurity, or other life issues.

Habitat for Humanity of Fairfield County Endowment – for the benefit of Habitat for Humanity of Fairfield County, Ohio.

Harcum House Endowment – for support of Harcum House and its mission.

David L. Johns Lancaster Festival Capital Improvement – for support of capital expenditures of the Lancaster Festival.

Lancaster Arts and Civic Club Endowment – for the support of the Lancaster Arts and Civic Club and its affiliated agencies.

Lancaster Camp Ground Endowment – to provide funds to solve special problems or carry out special projects which strengthen, extend and develop the Lancaster Camp Ground's mission.

Lancaster-Fairfield Community Action Agency Endowment – to be used for general support of the Community Action Program Commission of the Lancaster-Fairfield County Area, Inc.

Lancaster Fairfield County Charity Newsies Nauman – to provide funds designated for the support of the Lancaster Fairfield County Charity Newsies.

Lancaster Festival – for support of the Lancaster Festival.

Lighthouse – to support The Lighthouse, its staff, and its residents, and to be a benefit to Fairfield County.

Lithopolis United Methodist Church Endowment – to support both general Lithopolis UMC ministries and church facilities as the church continues to help more people develop and strengthen relationships with Jesus, so lives and communities are changed.

Meals on Wheels Fairfield County – to fund programs that will contribute to the achievement of Meals on Wheels of Fairfield County.

New Horizons Youth and Family Center Endowment – for the unrestricted support of the charitable or educational purposes of New Horizons Youth and Family Center and its affiliated agencies.

The Ohio Glass Museum – shall be used for the support of the operations of the Ohio Glass Museum.

Olivedale Foundation – for the purpose of the maintenance, upkeep and beautification of Olivedale Senior Center and Park.

Olivedale Senior Citizens of Fairfield County – for the purpose of enriching the lives of members through connection and activities.

Pickerington Public Library – to provide support and perpetuate the Pickerington Public Library for the use and benefit of the citizens of the Pickerington Local School District.

Pickerington-Violet Township Historical Society – to support the operations of the Pickerington-Violet Township Historical Society and Museum.

Pickerington-Violet Township Historical Society Endowment – to support the operations of the Pickerington-Violet Township Historical Society and Museum.

Pickerington Youth Athletic Association, Inc. Capital Improvements – for capital improvements to benefit the Pickerington Youth Athletic Association.

St. John's Episcopal Church Mithoff – to provide financial aid and stability for St. John's Episcopal Church for present and future purposes, objectives, programs and expansion.

Trinity United Church of Christ Capital Campaign – the fund shall be used for the expansion and future projects of Trinity United Church of Christ.

Trinity United Church of Christ Equity Housing – the fund shall be used for support of housing for the minister of Trinity United Church of Christ.

Trinity United Church of Christ Fundraising – the fund shall be used for special projects and to offset expenses incurred by the general fund.

Trinity United Church of Christ Memorial – the fund shall be used as designated by deceased's family or by Trinity United Church of Christ.

United Way of Fairfield County Endowment – for operations of United Way of Fairfield County.

United Way of Fairfield County - Sherry Orlando Endowment – to provide income for an annual gift to United Way of Fairfield County' Annual Campaign and to United Way of Fairfield County.

Unrestricted Festival – to fund programs that will contribute to the achievements of the Lancaster Festival.

Victoria Opera House – to support the operation, renovation, restoration and/or land acquisition to further the mission of sustaining the last historic opera house in Fairfield County.

Wagnalls Memorial Library – to support the needs of The Wagnalls Memorial Library community by providing programs, services, and materials for all generations.

Special Project Funds

This type of fund is established so that the Foundation can partner with an organization on a short-term charitable project.

250 Plates Special Project – to support record keeping of gifts to and grants from this special project fund in collaboration with Destination Downtown Lancaster for the 250 Plates Event.

All Accessible Sport Complex & Park – for the purpose of establishing a ball field that can be used by children and adults with disabilities as well as the community at-large.

Fairfield 33 Development Alliance – for the support of the Fairfield 33 Development Alliance.

Fairfield County COVID-19 Relief – to provide grant resources to qualified charitable organizations operating in Fairfield County that are directly supporting residents whose basic needs are going unmet due to COVID-19.

Fulton Stadium Turf – for the purpose of purchasing and installing artificial turf at Fulton Field in Lancaster, Ohio.

Save the Fairground's Old Grandstand – for the purpose of preservation of the Fairfield County Fairground's old grandstand in Lancaster, Ohio.

Sensory Trail – for the purpose of building and maintaining a Sensory Trail near Forest Rose School that can be used by children and adults with disabilities as well as the community at large.

Stenger Tuition Assistance – for the purpose of providing tuition assistance for students attending William V. Fisher Catholic High School.

Stoutsville Community Park – for the purpose of developing a park for the benefit of the residents of Stoutsville, the surrounding areas, as well as the community at large.

DONORS

The Academy System, Inc.
Amazon Smiles
Melissa Amick
Jonathan and Christine Apple
Arbuckle Phayer Accounting Group, LLC
Maggie Arendt
Lorraine Arnold
AT&T
Ava Jewelers
Lisa Averill
Nancy Turner Bachman
Jim and Jay Bahnsen
Baltimore Elite
Karen Bambas
The Barbee Family
Molly Barber
Lynn and Ricardo Barboza
Helen Barker
Margot Barnes
James Barrett
Joe and Catherine Barrows
Molly and Dan Bates
Deborah Batz
Frances Baughman
John and Marcia Baughman
Gene and Johnita Baumgardner
Ron and Judy Beal
Jeff and Michelle Beard
Michael Belek
Albert and Carolyn Bellisari
Charles Bensonhaver
Christopher and Heather Berger
Norma Kristy Berger
Mike Bergum
Mary Phyllis Bethel
Tessa Bigerton
Cathy Bitler
Justin and Jennifer Blackstone
Kenneth and Susan Blaies
Blue Label Fund
Blue Label Packaging Company
David Blume
Bob Evans Alum
Bob Evans Restaurants' Friends of
Toni McKinney
Melody Bobbitt
Robert and Jody Bode
Amy Boggs
Brenda Boggs
Joshua Bohl

Daniel and Linda Bolger
Bonnie Jean Bolsen
Tim Borah
Carol Bowen
Kevin and Mary Jo Bowman
Garry and Ellen Boyd
Marilyn Boyd
Kevin Boyer
Sandy Boylan
Art and Helen Brate
Bremen Bethel Presbyterian Church Freisner Fund
Ann Brown
Elizabeth Brown
John and Gloria Brown
Kathryn Brown
Larry and Linda Brown
Lauren Brown
Larry R. Browne
Cole Bryant
James, Jean, and J. L. Bryant
Buckeye Lake Marina, Inc.
Samantha Buckley
Buckeye Power, Inc.
Esther JoAnn Buller
Bundy Baking Solutions
Robert Bundy
Casie Burke
Debra Burke
Roger Burnard
Derek Burns
Mark and Carol Burns
G.M. and P.S. Burnworth
Business System Solutions, Inc.
Nicholas and Masie Buskirk
Jill Buterbaugh
Franklin and Amiee Byers
Cora Cain
Jim and Barb Callahan
Susan Calvert
James and Hannah Camp
Jeff and Michiko Campbell
Joni Campbell State Farm Insurance
Mike and Vicki Campbell
Campbell's Countertops, Inc.
Steven and Jennifer Camper
Bryton Carruthers
Dennis and Jennifer Carruthers
Kevin Cater
William and Rita Cattran
CBW Farms, Inc.

Thomas and Nancy Chaplin
Kathryn Cheek
Kim and Ricki Chenault
Vic and Yvette Christopher
Courtney Churchill
Thomas and Suzanne Claerson
Clark Insurance
Joseph and Becky Clark
Lisa Clark
Marilyn Clark
Tom and Janet Clark
The Clark Family
Lynn Clarke
Clarko Company
Classic Designs Pool & Spa, LLC
Claypool Electric
Robert and Sarah Claypool
Frank E. Clegg
Russell and Sarah Cline
Randy and Traci Coffman
Amie Cohen
Barry Cohen
Coldwell Banker King Thompson Foundation
Cindy Lou Collins
Ruth Ann Combs
Combustion Brewery & Taproom
Communication Workers of America Local 4324
Company Wrench
Bob Competti
Eileen Competti
Robert and Cheryl Conklin
Debra Connell
Kathryn Connor
Michael and Meghan Dewhurst Conroy
Brad Cook
Elsie Cook
Karen Cook
Karen Cookston
Barbara Cooper-Schaeffer
Anthony and Susan Coratto
William and Earlene Corban
Aundrea and Greg Cordle
Nancy Cork
K. P. and Vera Cory
Steve Cothrel
Jason and Bethany Cottrill
Mark Cottrill
Steven and Joyce Cox
Coyote Run
Allison Cramer

GRANT SPOTLIGHTS



FALLEN HEROES

FAIRFIELD COUNTY FALLEN OFFICERS BANNERS

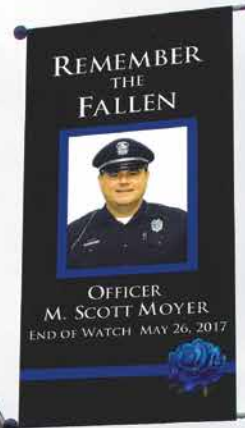


In an effort to honor her husband and four other law enforcement officers from Fairfield County who gave their lives in the line of duty, Connie Moyer worked with Destination Downtown Lancaster to create the Fairfield County Fallen Officers Banner Project. Each year during the month of May, banners will be hung in the downtown district on Main Street between Columbus Street and High Street to recognize each of these officers. Banners will also be displayed in front of the Lancaster Police Department.

The fallen officers honored are: Deputy Ethan Collins, Deputy Chad Edwards, Officer Brett Markwood, Officer M. Scott Moyer and Officer William T. Osbourne.

The project was funded in part by a grant to Destination Downtown Lancaster from the Jerry and Janet Nauman Fund. The Lancaster Street Department supported the project by taking responsibility for placing, removing and storing the banners each year.

“It is extremely important to a survivor of a fallen officer to keep the memory of their loved ones alive. With the perilous environment that our current law enforcement officers must endure, it is equally important to acknowledge their service,” said Connie Moyer, wife of fallen Officer Scott Moyer. **“Fundraising, even for a worthy cause, can be difficult. We were fortunate to have the support of several contributors, however, the Fairfield County Foundation was able to provide the final money needed to complete this project.”**



Larry and Cathy Crawford
 Douglas Cronin
 Crown Closures Machinery
 Tom and Mary Crozier
 Rosemary Kathy Crum-Bowden
 Suzanne and Ken Culver
 Robert and Meloye Cunningham
 Adam and Amanda Custer
 Ann Custer
 Judith Custer
 Wayne and Christine Custer
 Customink, LLC
 David and Anne Darling Cyphert
 George and Pam Daft
 Pam Meloy Da Ross
 Michael Daubenmire
 Nicole Davis
 Ann Decker
 Dallas Deeds
 Beverly Sater Dempsey
 Addie Dennis
 Lily Dennis
 The Derksen Family
 Dale and Jeanie DeRolph
 Dean and Cathie DeRolph
 Michael and Ann Destadio
 Thomas DeWeese
 Ashley DeWitt
 James Dick
 Linda Disbennet
 Lynda and Dennis Disser
 Anna Dittoe
 Dale and Susan Dixon
 Emily Dixon
 Lee Anne Dodderer
 Sheri and Jay Dodds
 Brian and Rachel Doerschuk
 Dr. and Mrs. Robert Dominguez
 Steve Donahue
 Jodi Donaldson
 Donley Family Fund
 Roger and Margie Donnell
 John and Sandra Doult
 David and Heather Downs
 Herman Dreier
 Edward and Tammy Drobina
 Beth Harcum Dubberley
 Donis Duncan
 Linda Duncan
 Mark and Heather Duncan

Terry Dunlap, Sr.
 Jill Ellen Dunlap
 Dwayne R. Spence Funeral Home
 Dorothy Ebright
 Barbara Eck
 Jennifer Eck
 William and Valerie Eckman
 Jim and Judy Edwards
 Todd and Becky Edwards
 Keith and Terri Ehmann
 Dick and Petey Ellinger
 David and Tammy Elliott
 Janet Elliott
 Nancy Engeman
 Drew Evans
 Taylor Evans
 Brenda Eveland
 Charles and Diane Eversole
 Amy and John Eyman
 Gertrude Eyman
 Melanie Faigley and Teresa and Lisa,
 Toni McKinney's friends
 Fairfield Co. Medical Alliance
 Fairfield Federal Savings & Loan Assn.
 Fairfield Financial Solutions, Inc.
 Fairfield Homes, Inc.
 Fairfield Medical Center
 Fairfield National Bank
 Fairfield Up, Inc.
 Brittany Fancher
 Bill and Mindy Farrow
 Suzette Fedor
 Jonathan Ferbrache
 Danny and Candace Finrock
 Richard and Joanne Finney
 Amanda Fisher
 James Fisher
 Michele Battle Fisher
 Pamela Fisher
 Tom and Rita Fisher
 The Fitzgerald Family
 Tony and Shirley Fortkamp
 Robert and Judy Foster
 Elden and Joyce Foulk
 Foundation for Appalachian Ohio
 Elizabeth Fox
 James and Lois Fox
 James French
 Keith and Barbara French
 The Friel Family

Friends of Lancaster Parks & Recreation
 Jack and Pattie Frohnapfel
 G's Hidden Treasures, LLC
 Anna Gaal
 Carol Gaal
 David and Nancy Gallimore
 Art and Anna Mary Gardella
 Thomas and Judith Gasser
 Jennifer Gawell
 Mark and Linda Geer
 Joe Geno
 George J. Igel & Co., Inc.
 Tracy Gerardi
 Chris Gerber
 Sky and Tammy Gettys
 Lorelei O. and David Gibbs
 Lorelei & David Gibbs Family Fund
 Phyllis Gibbs
 Jill Gilmore
 John Gilmore
 Norah Ginty
 Matthew Glanzman
 Suellen Goldsberry
 Good Neighbors in the Village
 Pamela Good
 Sean and Caryn Gorby
 David and Amy Gordon
 Gorsuch Construction, Inc.
 Leonard and Kristi Gorsuch
 Tom and Linnie Gramlich
 Edward Greve
 Terry and Val Griffith
 Sally Grimm
 Dwight and Mary Grubb
 Jennifer Grubb
 Jeffrey and Lisha Guminey
 Wayne and Christine Gump
 Ed Gurile
 Kay Gustavson
 James and Noreen Haiduk
 Lee Ann Haight
 Len Hajost
 Rosemary Hajost
 Cheryl Hale
 Nathan Hale
 Richard Hall
 Tim and Peggy Hall
 Brian Haller
 Heather Hamilton
 Tom and Jean Hammer

Amber Hampton
 Brooke Hampton
 Logan Hampton
 Harcum Family Fund
 June Harcum
 Judy Haroon
 Toni Harper
 Martin H. Harris and Robin Rhodes
 Patrick and Linda Harris
 Ronda Perry Harrison
 Hartford Fair
 Tish Monger Harwood
 Adam Hazlett
 Bill and Jackie Heath
 James and Karen Heath
 Robert and Sheila Heath
 Brad and Barb Hedges
 Joan Hedrick
 Joan Heft
 Teresa Heiss
 John and Kay Helm
 Bill and Connie Hendren
 The Henry Family
 Steven and Suzanne Henwood
 Marc and Natalie Herdman
 Jennifer Hess
 Ben Hill
 Julia Hilty
 Bridgette Hintz
 Glenn and Jodi Hise
 Phillip Hobbs
 Sue Hochradel
 William and Martha Hochradel
 Jeffrey and Lisa Hoffman
 David Hogrefe
 Terry and Constance Holder
 Eleanor Hood
 Julia Hoover
 Amy Howard
 Patrick Howe
 Carolyn and Norm Hoyt
 Michael and Janet Hubbard
 Joshua Huff
 Kelly Huff
 Andrew Huffman
 Thomas Hughes
 Michael and Krista Humphries
 William and Barbara Hunzicker
 Darrell and Martha Huston
 Averie Hutchison

Olivia Hutchison
 Scott and Deborah Hutras
 John and Tammy Icenhour
 Kathryn Iles
 Douglas Ingram
 Beth Inman
 Installed Building Products Foundation Fund
 The Instigators
 International Cardiac Care Program Fund
 Roberta Irwin
 Mary Jackson
 S. Farrell and Patricia Jackson
 Paul Jacobs
 John and Diana Janoso
 Mike and Jennifer Jarvis
 Pamela Jarvis
 JC & Company
 Mary Jedlicka
 Michell Jensen
 James and Lee Jewett
 Julia Johns
 Angel Johnson
 Kate Johnson
 Z. Marshall and Phyllis Johnson
 Barbara Johnston
 Robert Johnston
 Amy Jones
 Daniel and Martha Jones
 Norma Jones
 Mike and Jane Joos
 JPMorgan Chase Foundation
 John Kantner Law Office
 Rod and Wendy Kasler
 Dorothy Kavanaugh
 Russell and Pamela Kaylor
 Brian Scott Kelley
 Dwight and Barbara Kelley
 Kelli Kelly
 Tracy Kelly
 Bob and Jan Kemmerer
 Cathy Kessler
 Bill Kibler
 Phil and Janice Kiger
 Killbuck Savings Bank Co.
 Abby King
 Regina King
 Thomas King
 Betsy Kinkela
 Anne Hart Kiphen
 Ed and Mary Anne Kitchen

DONORS

Kathy Kittredge
 Cole Kleinline
 Cort Kleinline
 Rick and Cherie Knapp
 Rita Kneze
 Knights of Columbus Council 1016
 Martha Knotts
 Francis and Amanda Koenig
 The Kohler Family
 David and Margaret Kose
 Thomas and Deborah Kose
 Elizabeth Kotwis
 Mollie Kovacs
 Adam and Jennifer Kraft
 Alyssa Kraft
 C.J. Kraft Enterprises, Inc.
 John Kraner
 Douglas Krapf
 Jack and Anna Kreitz
 Kreutz Investments
 Angela and Greg Krile
 Justin Krile
 Krile Communications, LLC
 Kroger
 Phyllis Kuhn
 Sabine and Dana Kuhn
 Scott and Leslie Kulis
 Jessica Kull
 Kumler Collision, Inc.
 Laurie Lach
 Lady Gales Hoop Parents
 Barbara Lafferty
 Linda Lally
 Kristen LaMacchia
 William Lambert
 Lancaster Camp Meeting & Church
 Assembly Association
 The Lancaster Festival, Inc.
 Lancaster Kiwanis Club
 Lancaster Rotary Club
 David Landis III
 Robert Landis
 Scott and Amber Landis
 William Lane
 Beth Ann Lang
 Suzanne Lang
 Carol Langenberg
 James Langenderfer
 John Lansberry
 John and Marilyn Lansberry

Robert Lantz
 Donald Lape
 Todd and Cynthia Lape
 Dean and Wendy LaRue
 Wayne and Jennifer LaRue
 Mary Lawrence
 Nickie Leckrone
 Demi Lee
 Todd Lee
 Hannah Leith
 Leitnaker Angus Farm, LLC
 Tim and Dee Ann Leitnaker
 Todd Leupold
 Phyllis Levy
 Mike and Marla Lieber
 The Lighthouse, Inc.
 Pauline Limbach
 Judith Linder
 Diane Liston
 Lithopolis Livestock 4-H Club
 Lithopolis United Methodist Church
 Local Waste Services, LTD.
 Brian and Jacqueline Long
 Brenda Lucko
 James and Jean Luse
 Lucinda Lynch
 John and Donna Lyons
 Patrick Lyons
 Joseph Machado
 Diane Maguire
 Alan and Maris Mahler
 Peggy Mahler
 Barbara Marin
 Jakob Markwood
 Jennifer Markwood
 David Marple
 John and Susan Marque
 Martens Charitable Trust
 Max and Lois Martin
 Paul Martin
 Amanda Marutz
 Carol and Gregg Marx
 Frances Mathias
 Jay Mattlin
 Jean Mauger
 Bette Marie Mauller
 Brody Mautz
 Emily McClay
 McClelland Fund
 Robert and Jami McClure

Lisa McCormick
 Brandy and Hahna McCreery
 Michael McDevitt
 Wells McDonald
 Terry and Christine McGhee
 James and Jayne McGill
 Margaret McKinney
 Rick McKinney
 Robert McKinney, Jr.
 The Sam McKinney Family
 Jennifer McMahon
 Casey Meadows
 Pam Meloy Da Ross
 Hollie Merchant
 Nicholas Merrill
 Joshua Messerly
 Kent and Katie Metcalf
 Brenda Metcalf-Hall
 Catherine Mets
 Estate of Harold E. Metzger
 Bill and Debbie Meyer
 Richard Miche
 MICRO
 Mile Marker Business & Consulting Services, LLC
 Craig and Joan Miller
 Gerhard F. Miller Memorial Fund
 Kent and Judy Miller
 Leonard and Linda Miller
 Marc and Fran Miller
 Michael and Diane Miller
 Rodger and Joyce Miller
 Todd and Jan Miller
 Sandy Milligan
 Jack Mills
 Marlo and Bonnie Mills
 Laura Misch
 Dorothy R. Mitchell
 Karen Mitchell
 Michael and Denise Mitchell
 Modern Woodmen of America
 Deborah Monger
 Carolyn Moore
 Joan M. Moore Trust
 Thomas W. Moore
 Tom R. Moore
 Tami and Dave Morehart
 John Morehead
 James Morgan
 Jennifer Morgan
 Joseph and Patricia Morris

Beth Morrisette
 David Morrow
 Tom Morse
 Chris and Jodi Motta
 Dee and Kathy Mowry
 Cheryl Myers
 Charleen Naayers
 Jef Naayers
 Nartker, Grunewald, Eschleman & Cooper, LLC
 Kimberley Nauman
 Ellen Christine Neal
 Kim Nehus
 Barbara Ngai
 Dan Nichols
 Nickolas Savko & Sons, Inc.
 Xavier Nihiser
 Ninety One: One Foundation Fund
 Connie Norris
 Northwest Title - Lancaster Office
 Terry and Sue Oehrtman
 Jenny O'Hare and Steve Romine
 Jerry and Kathy Oliphant Charitable Fund
 John and Lisa Oliver
 Sherry Orlando
 Wes and Laura Osborn
 Ken Overbey
 Ron and Carole Packard
 Ron Pairan
 Bill Palmer
 Carolyn Palmer
 Park National Bank
 William and JoEllen Parker
 Edward Patrick
 Joyce Patton
 Randy and Donna Paul
 Diana Paxton
 Charles and Debra Paynter
 Keely Pearce
 Peggy Pedigo
 Peoples Bank
 Scott & Sherri Perry
 Randie and Kathy Peters
 Gennadiy Petropavloskiy
 Jodie Phayer
 Karen Phelps
 Pickerington Clovers 4-H Club
 Pickerington Local School District
 Pinnell Dance Centre
 Kenneth Planisek
 Ralph and Peggy Portier

Matt Poston
 David, Judy, and Brandi Potock
 Tori, Jake and Matthew Potock
 Susan Potter
 Precision Overhead Door, Inc.
 John Price
 Tom and Sally Eyman Price
 Vicky Price
 Jolyn Pugh
 RAF7
 E. John and Mary Raab
 Elizabeth Randles
 Jodi Ranegar
 David and Jenifer Ray
 Raytheon Program Management (Paveway)
 Katie Redinger
 James and Karen Reed
 Robert Reed
 Campbell Reese
 Parker Reese
 John and Renee Reilly
 Marian Reitano
 Walter and Linda Renz
 Republic Services, Inc.
 MaryAnn Richards
 Jeremy and Jennifer Richardson
 Ricketts & Clark Co., LPA
 Carla Ricketts
 Cheryl Ricketts
 Xander Riegler
 Matthew and Carrie Roberts
 Christine Robertson
 David and Jean Robertson
 Dr. Martin Robson
 Rockmill Financial Consulting, LLC
 Charlotte M. Rockwood
 Deborah Rockwood
 John H. Rockwood
 Maxwell Cade Rockwood
 Peter K. Rockwood
 Phillip P. Rockwood
 Robert Cotton Rockwood
 Clover Rogers
 Donald and Jacalyn Rogers
 Kenneth and Diana Rogers
 Steve and Judy Root
 Martha Rose
 Taylor and Derek Rosecrans
 Larry and Nanciann Rosier
 Jeanie Rothenberger

FCF PROFILE



DIVERSITY, INCLUSION & EMPOWERMENT FUND

FAIRFIELD COUNTY DIVERSITY, INCLUSION AND EMPOWERMENT FUND

The Fairfield County Diversity, Inclusion and Empowerment Fund, established in partnership with Krile Communications, was created to inspire, motivate and generate new and exciting opportunities within the community to foster conversation, collaboration and action. The fund provides a unique, local opportunity for community members to make financial contributions and support community causes that help build bridges and drive positive change in Fairfield County. The fund's purpose is intentionally broad to encourage creative ideas that will connect the community in new and innovative ways. Grants (maximum of \$3,000 per grant) are awarded quarterly to non-profit organizations whose applications meet the criteria and intention of the fund.

"Our company is dedicated to harnessing creativity and communication to connect our community," said Krile Communications CEO, Angela Krile. "Every community has unique needs when it comes to diversity, equity and inclusion, and we wanted to establish a fund in Fairfield County that could quickly respond to our specific, local opportunities and challenges."

The grant selection committee for the Diversity, Inclusion and Empowerment fund is comprised of the following members:

- Michele Battle-Fisher, Adjunct Instructor, Temple University Center for Urban Bioethics & Author, Applications of System Thinking to Health Policy and Public Health Ethics
- Gareth Boyd, Director of Finance, Blue Label Packaging Company
- Amy Eyman, Executive Director, Fairfield County Foundation
- Angela Krile, President & CEO, Krile Communications
- Hondre McNeil, Owner, SWET Fitness
- Hollie Staten Merchant, Owner, Blue Valley Massage
- Laura Tussing, Chief Experience Officer, Regional President, Park National Bank



GRANTS



YOUTH ADVISORY COMMITTEE

CONTINUES TO CREATE AN IMPACT AND INSPIRE FUTURE LEADERS

The Fairfield County Youth Advisory Committee was established in 2018 to empower Fairfield County high school students through leadership and community service. Participants have the opportunity to get involved in projects that support initiatives for youth in their own communities and gain real-world experience, with responsibilities for reviewing submissions, completing site visits and presenting recommendations to the Board of Trustees. The 18-person committee, which changes each year, is made up of juniors and seniors from across the county. All 11 Fairfield County High Schools were represented on the committee this year.

The Foundation's Board of Trustees and the Youth Advisory Committee of 2019-2020 awarded grants totaling \$10,000 to eight organizations to benefit youth in Fairfield County.

- Big Brothers Big Sisters of Fairfield County for supplies for Adult 101 Match Enrichment Classes.
- Flying Horse Farms to support dietary needs of children with serious illnesses from Fairfield County during camp season.
- Friends of the Lancaster Parks and Recreation for giveaways and prizes during the Alley Park Fishing Derby.
- Frontline Church of God for back-to-school supplies distributed to families in Amanda-Clearcreek school district.
- Good Neighbors in the Village for supplies for their after-school program in the Baltimore area.
- Lancaster Vineyard Church for community outreach projects during their Youth Leadership Camp.
- United Way of Fairfield County for their Feeding Our Future program, which provides food for children on the weekends at Lancaster City, Berne Union and Amanda-Clearcreek schools.
- Young Life Lancaster for marketing and promotional materials to promote and expand the group in Fairfield County.



Robert and Susan Roush
 Marjorie Rowles
 John Ruff
 Rushville Marathon
 Lisa Ryan
 Michael and Martha Ryan
 SAETD's Friends of Jeff Hubbard
 Betty Sakas
 Thomas and Gina Samosky
 Tiina Sandberg
 Michael and Lori Sanders
 Karen Sanner
 Laurel Santino
 Sarah's Tuesday Bridge Club
 Joseph and Jenny Sarisky
 Beverly Sater
 Jeff and Carol Sauer
 Hannah Saum
 Cindy Saunders
 John Sauter
 Carol Scheetz
 Billie Schmitz
 Ed and Michele Schott, Jr.
 Peter Schueler
 Gabriella Schumacher
 Shell and Sandra Scott
 The Sech-Kar Co.
 Susan Secoy
 John and Lynn Seifert
 John Shackelford
 Nicole Shafer
 Forrest and Tracy Jo Shahan
 Brenda Shamblin
 Cheryl Shaner
 Kaylee Sharp
 Theresa Sharp
 Shaw & Holter, Inc.
 Kerry Sheets
 Gary and Janet Sheldon
 Phil and Kim Sheldon
 Tammy Shelly
 Shelter Foundation
 Mike and Sheri Sheridan
 Sherman Rotary Club of Lancaster
 Jason and Amy Shick
 James and Barbara Shinovich
 Kerry and Diana Shirk
 Michael and Victoria Shook
 Rebecca Shook
 Shooting Stars 4-H Club

Ande Shoults
 Erel Omar Shrider, Jr.
 John Shriver
 Judith Shupe
 John and Kamilla Sigafos
 Jennifer Sitterley
 Sitterley, Vandervoort & Davis, Ltd.
 Bill and Sally Sitterley
 PJ and Geraldine Sleber
 William and Karen Slusarczyk
 Jerry and Tina Smidebush
 Avery Smith
 Connor Smith
 Daniel Smith
 David and Deb Smith
 Edward Smith III
 Ivan Smith III
 Jason and Kristin Smith
 Mary Jo Smith
 John Sauter
 Sadie Smith
 Sandra Smith
 Stan and Connie Smith
 Susan Smith
 Wesley Smith
 Adam and Patricia Snider
 David and Anne Snider
 Gordon and Elizabeth Snider
 John and Jane Snider
 John and Mary Snider
 Joseph E.B. Snider
 Mike and Brenda Snider
 William T.D. Snider
 Howard and Tawny Sniderman
 Richard Snyder
 South Central Power Company
 George Spangler
 Sally Spangler
 Ruth Spaulding
 Fiona Spears
 Andrew Specht
 Laura and Andy Specht
 Dwayne and Patty Spence
 Andrea Spires
 Joan Spires
 Alison Sponseller
 Andrew and Melissa Sponseller
 Addison Squibb
 SRI Ohio, Inc.
 Pamela Stafford
 Rosemary Stafford

Lowell and Sally Stallsmith
 Donna Stalter
 Standing Stone Bank
 Jillian Starner
 Jonah Starner
 Jorja Starner
 Josh Starner
 Madison Staniloiu
 Stanwood Staff Fund
 State Farm Insurance Companies
 Stebelton Snider, LPA
 Gerald and Rebecca Stebelton
 Susan Steinberg
 Steiner & Associates
 Roy and Brenda Steinhoff
 Estate of Clarice Stemen
 Estate of Thomas E. Stenger
 Logan Stevens
 Lucas Stevens
 Barbara Stiles
 Michelle & Nathaniel Stitzlein
 Steve Stivers
 Elise Stone
 Sarah Stoughton
 Tom and Susan Stoughton
 Stream and Wetlands Foundation
 Emma Strickler
 Reid Strickler
 Riley Strickler
 Gerri Strigle
 Kim Sulzmann
 Ann Swearingen
 John and Marilyn Sweyer
 Amy Swinehart
 Dane and Karen Swinehart
 Cynthia Symansic
 Gary and Barbara Taylor
 Nancy Taylor
 Russell Taylor
 Taylor Rental of Lancaster
 L.S. and Marlene Tedrick
 ThinkBold Creative
 Steven and Paula Thomerson
 Thurston United Methodist Women
 Kim Timmerman
 Larry Tipton
 Anna Tobin
 Fred Tocco
 John Tocco
 Linda Tolentino

Brian and Sheryl Toller
 Toll Gate Middle School's Friends of
 Mary Jane Smith
 Minh Tran
 Jack and Mary Travis
 Trinity Health
 Trinity United Church of Christ
 Susan Kraner Trumble
 Charles Turley
 Judy Turner
 William Bennett Turner
 Laura Tussing and Josh Bruce
 Makaila Tussing
 Carol Uhl
 United Way of Fairfield County
 Ana Upah
 Peter and Madge Vail
 Thomas and Melinda VanBuren
 Craig and Amy Vandervoort
 Terre Vandervoort and David Rader
 Elson and Mary VanFossen
 Pamela Vanschoyck
 Suzanne Varney
 Edward Veeley
 Vinton County National Bank
 Violet Grange #1949, Inc.
 Sallie Voyles
 Hailey Waddell
 Ryan Waddell
 The Wagnalls Memorial Library
 Anna Mae Wagner
 Deborah Wagner
 Kevin Wagner
 Jim Wagy
 Raymond Waite, Jr.
 Stephanie Waite
 Butch Walker, Jr.
 Melissa Walker and Cortland Schmelzer
 Art and Betty Wallace
 Ronald and Melinda Wallace
 Barry and Kathy Waller
 John and Carol Walters
 Natalie Ward-Dodson
 Richard and Janet Warner
 Penny L. Wasem, CPA, CFP, PFS
 Shirley Wasem
 Eleanor Watson
 Teri Watson
 WB Graphics & Ts
 Dustin Weaver

Cheri Wellington
 Joan Wedge
 The Weiffenbach Family Fund
 Kathy and Ira Weiss
 Stephen and Lisa Wells
 Kyle Westbrook
 Jean Whitaker
 John Whitaker
 Marie White
 William and Mona White
 William and Ruth Whitehouse
 Karen and Jerry Whitt
 Matt Wideman
 Mary Widener
 Beth Wigton
 Andrew and Jessica Wilkins
 Dave Williams
 Kristen Wilson
 Margaret Winter
 Matthew Woida
 Barbara Wolf
 Anna Wolfe
 Tommy Wolfe
 Bob Wolfinger
 Women of the Moose Pickerington 2180
 The Wood Foundation
 Carrie Woody
 William and Janice Yaple
 Susan Young
 Young Family Farms
 Carol Yurt
 Elizabeth Zawislak
 David Ziegler
 Zollinger's Lakeview Farms, LLC
 E. Donald and Julie Zoog
 James Zulauf and Joyce Rose
 Charles and Beverly Zurhorst

GRANTS





Alaina Boggs Memorial Fund

Baltimore Firefighter Santa
Medical/Financial Assistance

All Accessible Sport Complex & Park Fund

VPL Architects, Inc.

Allison Lynn Conover Memorial Fund

Sycamore Creek School

Alma S. Busby Fund

Hospice of Central Ohio

Amy's Army Fund

Medical/Financial Assistance

Ann Chess Fund

Millersport Community Theatre

Barbara A. Webel Second Chance Animal Fund

Lancaster Animal Clinic
Creature Comforts Veterinary Center

Blue Label Fund

Mid-Ohio Foodbank
Adaptive Sports Connection
True Vision Christian Community
Diversity, Inclusion and Empowerment Fund

DACO Endowment Fund

Decorative Arts Center of Ohio

**Dr. Hubert M. and Pearl B. Amstutz
Memorial Fund - Salvation Army**

The Salvation Army of Fairfield County

**Dr. Hubert M. and Pearl B. Amstutz
Memorial Fund - Maywood Mission**

Maywood Mission

Dr. Thomas E. Stenger Lancaster Festival Fund

The Lancaster Festival, Inc.

Edward N. Sands Fund for Baltimore

Baltimore Area Museum Corp.
Liberty Union-Thurston School District

Fairfield County Health Fund

American Red Cross of South Central Ohio
Fairfield Medical Center Foundation
Fairfield Community Health Center

Fairfield Heritage Association - Crist Trust Fund

Fairfield Heritage Association

**Fairfield Heritage Association Operating
Endowment Fund**

Fairfield Heritage Association

Family Y Unrestricted Fund

Family Y of Lancaster and Fairfield County

Frances and George Utley Georgian Fund

Fairfield Heritage Association

**Fred Van Buren Educational
Assistance Project Fund**

Liberty Union Thurston Schools

Friends and Families for Veterans Fund

Welcome Boxes for Veterans
Clothing and Boots for Veterans

Friends of Michael Davis Memorial Fund

The Lancaster Festival, Inc.

George and Dollie L. Zimpfer Memorial Fund

Fairfield Area Humane Society
Decorative Arts Center of Ohio
Fairfield County Foundation - 31 Hour Give Matching Amount
Lancaster Vineyard Church
Ronald McDonald House Charities Central OH
Flying Horse Farms
Baltimore-Thurston Area Food Pantry
Pink Ribbon Girls
Bremen Food Pantry
Canal Winchester Human Services
Connexion West
Lancaster-Fairfield Community Action Agency
Lancaster Vineyard Church Food Pantry
Lutheran Social Services
Maywood Mission
Millersport Community Food Pantry
PCMA Food Pantry of Pickerington
St. Mark Church

GRANTS

The Salvation Army of Fairfield County
St. Vincent de Paul Society of Lancaster
Key to Giving
Shalom United Methodist Church
Bottoms Up Diaper Drive
Friends of Lancaster Parks & Recreation
Olivedale Senior Citizens of Fairfield County Ohio
Mills Memorial United Methodist Church

Gerhard F. Miller Memorial Fund
Kiwanis Special Fund for All-Abilities Park

Great Commission Fund
Reynoldsburg Baptist Church
Calvary Baptist Church

Harcum Family Fund
The Lancaster Festival, Inc.
United Way of Fairfield County
FC COVID-19 Relief Fund
Lighthouse, Inc., Lighthouse
The Salvation Army of Fairfield County
Lancaster First United Methodist Church

Helen Hedges and Golda Hedges Fund
Vasu Communications, Inc.
First Presbyterian Church

Hoyman Family Fine Arts Fund
Lancaster Men's Chorus

Hubie and Jenny Eyman Memorial Fund
The Lancaster Festival, Inc.

Hunter James Barber Memorial Fund
Lancaster Fire Department
Richland Township Fire Dept.

Janet S. Crist Memorial Fund
Evelyn Hazel Miller Foundation

Jerry and Janet Nauman Foundation Fund
Destination Downtown Lancaster

John and Jamie Weaver Fund
Bucknell University
Ramsey High School PTSO
First Presbyterian Church

Kent and Judy Miller Charitable Fund
FAIRHOPE Hospice & Palliative Care, Inc.

Kiwanis Special Fund
All Abilities Multi-Generational Playground

Lancaster Camp Ground Auditorium Preservation Fund
Lancaster Camp Ground Auditorium

Lancaster Festival Fund
The Lancaster Festival, Inc.

Lancaster Pride Fund
Columbus Lesbian Softball League

Lauryn "Lu" Oliphant Memorial Fund
Ohio State University Foundation
Nationwide Children's Hospital Foundation

Lithopolis United Methodist Church Endowment Fund
Lithopolis United Methodist Church

Lloyd F. and Diann L. Helber Fund
Lancaster-Fairfield County Charity Newsies

Lorelei & David Gibbs Family Fund
FC COVID-19 Relief Fund
Afterschool Programs of Lancaster
Fairfield Medical Center Foundation
Cleveland Clinic Foundation
FAIRHOPE Hospice & Palliative Care, Inc.
Lutheran Social Services
Lancaster-Fairfield County Charity Newsies

Matthew Jones Fund
St. Jude Children's Research Hospital
X Church

Ninety One: One Foundation Fund
FC COVID-19 Relief Fund
Nardone Family Trust
Foundation Shelters
Cornerstone Alive
Lancaster Vineyard Church
Grace Haven Ministries
Heritage of Faith Family Church
Living Word Church
Lutheran Social Services

Pickering Family Fund
Robert K. Fox Family Y

Pine Grove Host Fund
Amanda-Clearcreek Local Schools

Raymond Wilkes Young Artist Fellowship Fund
The Lancaster Festival, Inc.

Rich & Delores Troup Family Fund
The Lancaster Festival, Inc.
Fairfield County Strings & Keyboards

Robert A. Schatz Fund
Habitat for Humanity of SE Ohio

Rodenbaugh Family Advised Fund
The Lancaster Festival, Inc.
Fairfield Heritage Association
St. Peter's Lutheran Church

St. Peter's Lutheran Church Fund
St. Peter's Lutheran Church

Terry A. McGhee/Sally J. Grimm Community Fund
Ohio Glass Museum
Meals on Wheels Fairfield County
United Way of Fairfield County
Afterschool Programs of Lancaster
Fairfield 33 Development Alliance
Friends of Fairfield DD, Inc.
Lutheran Social Services of Central OH
Fairfield Center for disABILITIES & Cerebral Palsy, Inc.
Friends of Lancaster Parks & Recreation

The Donley Family Fund
FC COVID-19 Relief Fund
National Foundation for Transplants
PCMA Food Pantry of Pickerington
Tyler's Light, Inc.

The International Cardiac Care Program Fund
FCF - Community Impact Fund

The Lancaster Public Education Foundation
Lancaster City Schools

The Magpie Fund - Maggie Grace Lyons Memorial
Nationwide Children's Hospital Foundation

The Patricia A. Beam Endowment Fund
Sozo Pediatrics
Lancaster First United Methodist Church

The Rushcreek Grange Fund
Bremen Elementary

The Ryan Reeb Fund
New Horizons Mental Health Services

The Weiffenbach Family Fund
FCF - Community Impact Fund
Blue Star Mothers of America, Inc. OH10

Trinity United Church of Christ Bohr Fund
Trinity United Church of Christ

United Way of Fairfield County - Sherry Orlando Endowment Fund
United Way of Fairfield County

United Way of Fairfield County Endowment Fund
United Way of Fairfield County

Wanda Shaner Memorial Fund
FAIRHOPE Hospice & Palliative Care, Inc.

Wendel Family Fund
Lancaster-Fairfield Community Action Agency
Friends of Fairfield DD, Inc.
The Refuge
Lighthouse, Inc., Lighthouse

William D. Queen Scholarship Fund
Fairfield Union Local School District

William J. and Sarah E. Sitterley Fund
St. Mary of the Assumption Catholic Church

Williamson Family Fund
C.A.R.E., DBA The John 3:16 Center

SCHOLARSHIP



DYLAN SHARP

SCHOLARSHIP RECIPIENT URGES STUDENTS TO LOOK INTO FOUNDATION SCHOLARSHIPS

Dylan Sharp took full advantage of the scholarships offered by the Foundation throughout his college career, and now as a math teacher at Lancaster City Schools he is always advising his students to visit the Foundation's scholarship page to see what's available to them. With so many scholarships available, and most through a single application, he can't understand why any high school student wouldn't pursue this opportunity.

Always focused on creating an economical college experience, Dylan took advantage of College Credit Plus and other credit transfer options available to high school students and was able to enter college as a sophomore. He went to Ohio University Lancaster for one year and then transferred to Ohio University's main campus in Athens for his final two years. During those three years, he received the following scholarships from the Foundation:

- 2016-2017 - Shannon Family Scholarship
- 2017-2018 - Shannon Family Scholarship, Robert E. & Marion A. Carr Scholarship, LaVerne Raab Scholarship
- 2018-2019 - Shannon Family Scholarship, LaVerne Raab Scholarship

"I wouldn't be where I'm standing financially today if it wasn't for the Foundation," said Sharp. "Thanks to the scholarships I received, I was able to put myself through college with very little debt and now can focus on building my future."

Dylan graduated from Ohio University with a Bachelor of Science in Integrated Mathematics in 2019. He is very excited to be back at Lancaster City Schools as a teacher and baseball coach.





AWARDS

Donors' funds provided scholarships totaling \$705,095 to help students in Fairfield County attend the college of their choice. Annual scholarship awards have been made to full-time college students who have met specific scholarship guidelines.

Matthew W. Acton Memorial Golf
Chase Noland

Bashore College Trust Fund
Devin Holt

Paul D. Beck
Brandon Johnson and Zachary Meadows

Bloom-Carroll Alumni Scholar Athlete
Abigail Esbenshade and Jenna Keefe

David Boger Memorial - Rotary
Samantha Conrad

Marlowe Brainard
Hailey Blanchard

Jan M. Burdette
Abbygale Watson

Glenn R. Burns Dental Education
Shania Heimberger

James Caple
Ian Elick, Corinne Gorgas, Kathleen Latorre, and Benjamin Miller

Robert E. & Marion A. Carr
Skylar Allen, Karli Amick, Hailey Blanchard, Emma Bosser, Lexi Bussert, Sophie Culver, Alexandra Duncan, Alison Ety, Margaret Farrell, Emerson Goldenbagen, Mary Gundelfinger, Rachel Hingst, Amanda Horn, Samantha Kerns, Lauren King, Kate Kinley, Christa Layton, Samantha Lowe, Emma Reese, Grace Smeltzer, Grace Vail, and Kelley Williams

Ann Chess
Lucy Reed

Molly Ann Clark
Emma Bosser

Charles C. & Barbara Claypool
Emma Burley, Scott Downard, Joseph Innocenti-Travis, Ryan Keller, Elijah Kemmer, Tucker Meachem, Hattie Poling, and Payton Stewart

Deputy Ethan Collins
Caleb Peck

D.A.R.E.
Regina Stuckey

Davidson-Jaycees Community Service
Jon Hillberry, Samantha Kerns, Brittani Towe, and Cory Towe

Elsie R. McClelland Davis Memorial
Brooke Bolin, Sarah Doner, Mason Dum, Jonathan Gardner, Paige Hinton, Katie Krile, Cade L'Huillier, Erin Thaxton, Madison Wharton, and Samantha Young

Leroy & Bernice Ellinger
Meredith Leohner and Tyler Zoe

Eva G. Eyman - Rotary
Emily Baird, Paige Comstock, Emily Johnson, Katie Krile, Meredith Leohner, and Michaela Sahr

Fairfield County Medical Alliance Healthcare
Kelley Williams

Fairfield Federal Ron Keaton
Madison Dean and Halle Spangler

Amelia Fickel and Glenn Moodie
Colton Brown, Seattle Compston, and Hunter Jewett

George & Marilyn Finnen Education
Bryan Connell and Abbygale Watson

Bess H. Floyd Cultural Arts - Rotary
Autumn Brunney, Chloe Groves, and Amanda Trogus

Bess H. Floyd Music - Rotary
Christian Bean and Daniel Griffaton

Jerry Floyd Memorial - Rotary
Madison Dawson, Londyn Gould, Rachel Leitnaker, Amanda Stuckey, and Mikaela Wagner

Dr. Phil Floyd Dentistry - Rotary
Hayley Dunigan, Londyn Johnson, and Darcy Stebelton

Wilfred L. and Una H. Fosnaugh
Hailey Blanchard, Jacob Boles, Nathan Boles, Samantha Conrad, Amanda Cordray, Sophie Culver, Emerson Goldenbagen, Aaron Lawson, Devan Lewellen, Samantha Lowe, Issac Paine, Sydney Rauch, Grace Smeltzer, Alexis Snider, Abbygale Watson, and Alexia Wing

Foundation 45
Abigail Burggraf
Lynn and Lynda Freisner Fund
Marisa Mahler

Lorelei Owen Gibbs
Ashley Kelley

Patricia Woodyard Gilmore Memorial
Jeffrey Bolin

Bud Goodman Memorial
Aaron Sharp

The Jack Greathouse Gale Force Basketball Scholarship Fund
Jacob Davenport and Owen Snyder

O.J. Green Memorial
Hunter King and Jacob Reher

Robert V. Grilli Memorial
Quinton Burke and Katie Maynard

Jacob Guisinger Memorial
Nicholas Heilman and Tyler Householder

Nils Gustavson Scholar Athlete
Owen Snyder

Doug Henwood Memorial
Bryan Connell

Hocking Valley Dental Society
Marcie McGuire

Home School
Jacob Hyme

Billy J. Holbrook Memorial
Kennedy Harris

Henry and Eleanor Hood
Dominic Carpenter, Tyler Rockwood, and Payton Stewart

Joseph and PJ Hoover Family
Hannah Reho
Larry L. Hoover Memorial
Kamala Sweeney

Fannie M. Howe Nursing - Rotary
Alexandra Duncan

Trevor and Violet Jones Memorial
Hailey Blanchard, Tanner Harris, Noah Jewell, Abby Nelson, Kennedi Ramey, and Stephen Warner

Kiwanis Club of Lancaster
Ellison Jones and Rozanne Kuzma

Kiwanis Club of Lancaster - Bill White 4-H
Anna Fusek and Alexis Snider

Robert Knisley Fire Service
Leah Schultz

Lancaster Boys Soccer
Brian Shupp

Lancaster Community Chorus
Harrison Poor

Lancaster High School Class of 1957
Allison Conkey

Lancaster High School Class of 1959
Quinton Burke

Lancaster High School Class of 1964
Cara Falvo

Lancaster Junior Women's Club
Kennedy Couch

Lancaster Rotary Club
Jayden Tharp

Erik J. Landis Memorial
Tatum Campbell and Emma Gobert

Jamey Landis Memorial
Jocelyn Howell

Malinda Lifer
Samantha Conrad

Dr. Paul & Mary Magnuson - Rotary
Kirsten Canini and Shaili Kothari

Magpie Fund – Maggie Grace Lyons Memorial
Savannah Hurt

Frank P. Maguire
Lauren King

Officer Brett Markwood
Marisa Mahler

V. Ben Martin
Skylar Bader, William Eyman, Payton Kraft,
and Nathan Pechar

Clark M. McGhee and Carol T. McGhee
Brittany Devall, Scott Downard, Hayden Hartman, Evan
Mahler, Hannah Mahler, Chase Smith, Emma Thomas,
Sydney Verdow, and Collin Walker

Ruth Miller
Jackson Baker, Skyler Bates, David Bean, Jeffrey Bolin,
Amelia Borchers, Carter Brady, Emily Carson, Kevin Clark,
Rachel Crum, Sarah Doner, Krysten Emswiler, Margaret
Farrell, Hayley Fest, Lilianna Fisher, Lauren Founds, Jonathan
Gardner, Lauren Gill, Kaleb Goodyear, Brent Gulling, Saress
Hale, Brynn Heitmeyer, Jacob Hyme, Jill Kilger, Luke Kumler,
Miranda Lavey, Christa Layton, Cherilynn Marshall, Marcie
McGuire, Kaci Morin, Savannah Neely, Carlee Pieratt,
Sydney Rauch, Emma Reese, Emma Reilly, Jessica Robinson,
Audrey Schmelzer, James Sites, Tiffani Sloan, Grace
Smeltzer, Kate Smith, Owen Snyder, Rachel Swick, Katherine
Thornberry, Kathryn Tocco, Anna Varney, and Emily Wurster

Mt. Pleasant Kiwanis
Caleb Swartz

Elizabeth "Libby" Murry
Abigail Moore

Jaako Naayers Scholarship Award
Hope Custer and Blaine Keener

Nauman Sampson Wittenberg
Zachary Parkman

Tammy Nusser Foundation
Tatum Campbell, Kevin Clark, Sarah Doner, and Zoe Tyler

Roger Pedigo Memorial
Kaylee Phillips

Pickerington Music Boosters John Morrow
Corinne Gorgas and Abby Place

William D. Queen
Katie Burke, Devin Holt, and Dylan Smith

LaVerne Raab
Samuel Bechert, Madelyn Good, Angel Handshey, Madison
Nutter, and Jennifer Stoneburner

Kathleen K. Ridenour
Joshua Hines

Kathleen Kaser Ridenour
Mason Mitchell

Donald I. Rodenbaugh Engineering - Rotary
Jonathan Beiter, Brynn Heitmeyer, Luke Kumler,
and Evan Schobert

Wayne Roller Memorial
Melissa Hord and Jenna Riccardo

Robert Rowles Family Fund
Emma Gobert

Rushcreek Grange
Nathan Schmelzer

George Sakas - Rotary
Cassidy Smith

Edward N. Sands
Alexandria Bright, Alexys Dray, Tucker Meachem, Adrienne
Miller, Trevor Mohler, Anna Nielsen, and Savannah Simonson

Mollee J. Seifert
Marcie McGuire

Shannon Family
Justin Anderson, Ryan Arter, Emily Baird, Avery Baker, Stepheni
Baker, Matthew Bates, Sophia Boyden, Chadwin Bush, Shane
Casserly, Eden Clendenen-Vizzo, Samantha Conrad, Justice
Courtney, Lauren Craiglow, Kennedy Crook, Lainie Daniel,
Madison Dean, Spencer Deuscher, Emily Dickson, Amelia
Gilmore, Kensington Graham, Mason Gunther, Allison Hale,
Brendan Harris, Evan Hendrickson, Vincent Hoch, Cameron
Jones, Lindsey King, Lauren Lama, Georg Lang, Aaron
Lawson, Kristen Lawson, Nicholas Leach, Meredith Leohner,
Abigail Mahon, Grace Mahon, Tyler Monk, Teresa Nelson,
Grant Niemann, Madison Niemann, Cameron Passek, Dillon
Porter, Matthew Romine, Jr., Corbin Sammler, Emily Sampson,
Ethan Seifert, Alexander Shook, Aaron Sines, Kate Smith,
Libbie Taylor, Ally Thompson, Elizabeth Thompson, Cory Towe,
Blake Tracy, Mikaela Wagner, Cobe Ward, Kin Wong, Cassidy
Zaker, and Samantha Zishka

Tyler C. Sharpe
Ryan Meadows and Savannah Moorehead

Jacob Sims - Rotary
Anna Boving, and Chadwin Bush

Elsie and Jack Smith
Miranda Lavey, Michael Rose, Lucas Stemen, and Georgia
Thomas

Willard "Fuzz" Smith - Rotary
Cassandra Richardson

Clarence and Edna Steenrod – Rotary
Kirsten Canini

Russell N. & Clarice H. Stemen
Savannah Collis, Rudy Hill, and Anna Schmidt

Dr. Thomas E. Stenger
Vincent Bee, Mary Gundelfinger, Samantha Kerns,
and Barry Miller

Brian Stoner
Vincent Bee, Tatum Campbell, and Joel Kasik

Shelly Strigle- Rotary
Celia Bennett and Patrick McCrady

Steven E. Svoboda
Luke Kumler

Hannah E. Thrash
Lauren Parrett

Andrew "Drew" Townsend-Engle Memorial
Jennifer Mullins

Kenneth D. & Zita M. Trimmer
Avery Baker, Simon Bee, William Eyman, Mary
Gundelfinger, Samantha Kerns, Ashley Kilbarger, Vanessa
Kilbarger, Renee Miller, Grant Niemann, Mason Ortiz,
McKenzie Ortiz, Cameron Passek, Emma Reilly, Alexander
Shook, and Elijah Weis

**Wilbur O. Turner & Anita M. Turner and
Mildred L. Hatter & Frank H. Hatter**
Colton Cheeseman, Garrett Dunn, Macey Jardine, Emily
Johnson, Finley Kocher, Jessica Lambert, Colin Mingyar,
Evan Sines, and Alayna Smith

Violet Grange #1949
Jalin Gillespie

D. Eugene Ward
Skylar Allen

**James & Viola Wayland Accounting & Computer
Science - Rotary**
Andrew Grimes, Keegan Moore, Grant Nebbergall, Blake
Starkey, and Dakota Taylor

James & Viola Wayland Students Choice - Rotary
Sarah Bieber, Alison Ety, Alyssa Lanier, Ariel Lanier, Aaron
Lawson, and Blake Tracy

Dr. Martha Gesling Weber
Kayley Tschudy

Weis Family
Kathryn Tocco

Chad Welch Memorial
Caleb Peck

Mindi Wendel Memorial
Sarah Bieber, Madison Dawson, Cherilynn Marshall, Lucy
Reed, and Mikaela Wagner

Dorothy J. & William W. Wharton
Rose Bonhomme, Morgan Hartman, and Ben Johns

Charles T. Wilkins
Elizabeth Vrana

Edward A. Work, Sr.
Kaleb Goodyear

FINANCIALS

These condensed financial statements have been derived from the Foundation's audited financial statements. Copies of the audited financial statements are available at the Foundation office.

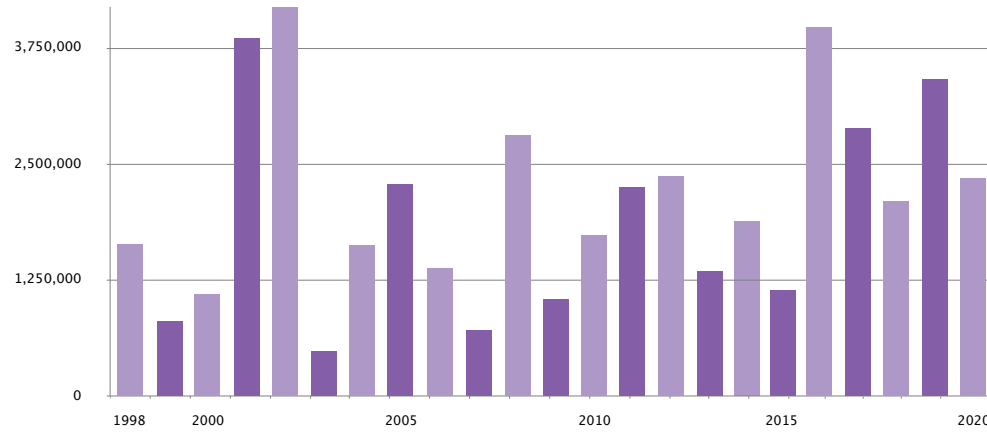
FAIRFIELD COUNTY FOUNDATION AND SUBSIDIARY CONSOLIDATED STATEMENTS OF FINANCIAL POSITION December 31, 2020 and 2019

	2020	2019
Assets		
Cash and cash equivalents	2,822,436	2,164,336
Accounts receivable	3,845	—
Investments	55,260,614	49,409,514
Other investments	704,400	634,400
Fixed assets and collectibles, net	911,800	837,856
Total Assets	\$59,703,095	\$53,046,106
Liabilities		
Accrued expenses	6,281	1,734
Managed assets under agency contracts	4,328,262	4,562,208
Total liabilities	\$4,334,543	\$4,563,942
Net Assets		
Net assets without donor restriction	54,471,399	47,663,034
Net assets with donor restriction	897,153	819,130
Total Net Assets	\$55,368,552	\$48,482,164
Total Liabilities and Net Assets	\$59,703,095	\$53,046,106

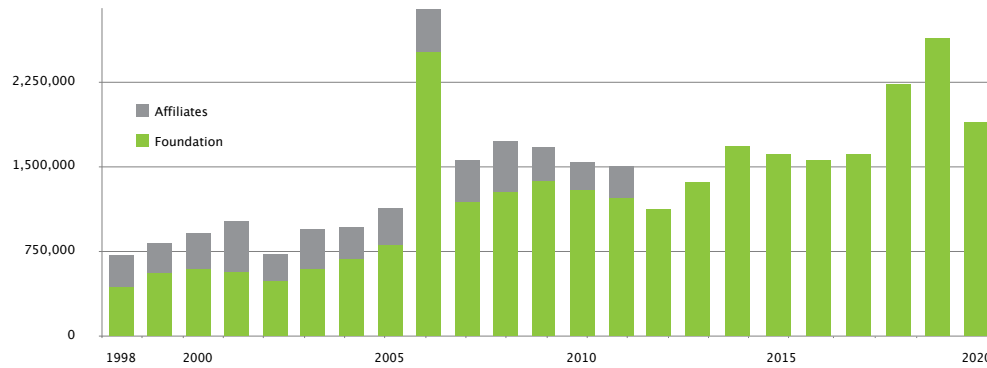
FAIRFIELD COUNTY FOUNDATION AND SUBSIDIARY CONSOLIDATED STATEMENTS OF ACTIVITIES AND CHANGE IN NET ASSETS FOR THE YEARS ENDED DECEMBER 31, 2020 AND 2019

	2020	2019
Net Assets With Donor Restriction		
Support:		
Contributions	2,374,712	3,541,414
Revenue:		
Investment return	6,869,715	7,616,678
Administrative fees	551,866	533,716
Rental and other income, net	130,523	49,424
Change in net assets with donor restrictions	-78,023	-54,904
Total support and revenue without donor restriction	\$9,848,793	\$11,686,328
Expenses		
Program expenses		
Grants	1,542,222	2,392,778
Scholarships	1,108,599	970,617
Supporting services expenses		
Management and general	262,024	237,454
Fundraising	127,583	129,348
Total expenses without donor restriction	\$3,040,428	\$3,730,197
Change In Net Assets Without Donor Restrictions	\$6,808,365	\$7,956,131
Net Assets With Donor Restriction		
Additions to net assets with donor restriction	99,990	75,261
Net assets added to/released from restrictions	-21,967	-20,357
Change In Net Assets With Donor Restriction	\$78,023	\$54,904
CHANGE IN TOTAL NET ASSETS	\$6,886,388	\$8,011,035
NET ASSETS - Beginning of year	\$48,482,164	\$40,471,129
NET ASSETS - End of year	\$55,368,552	\$48,482,164

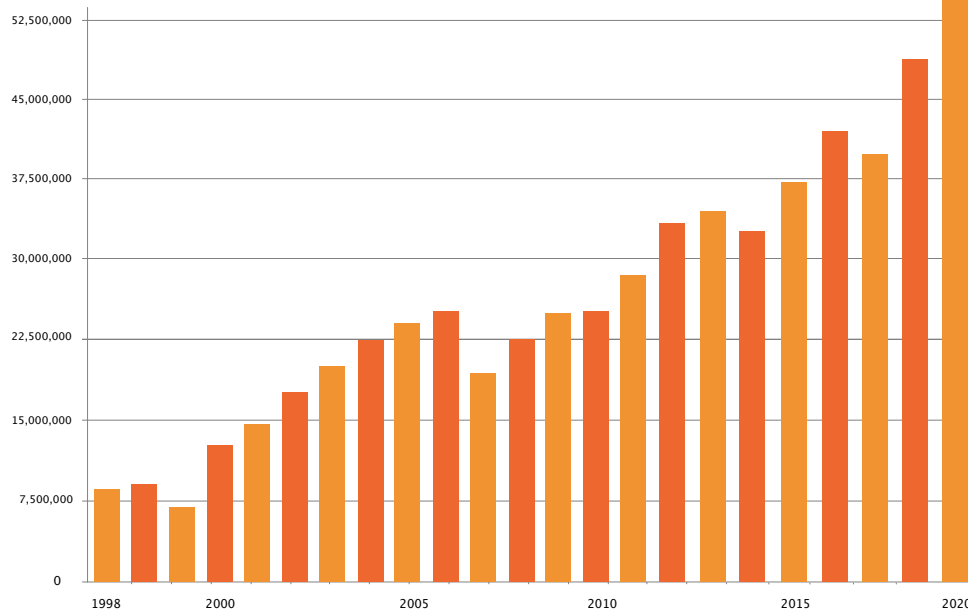
CONTRIBUTIONS



GRANTS & SCHOLARSHIPS PAID



NET ASSETS



AMBASSADORS' CLUB

The Ambassadors' Club was formed in 1998 to help build awareness of the Foundation's role and increase its visibility in the community. Ambassadors assist in this effort by promoting a better understanding of the Foundation, its role and its activities in Fairfield County. Generous gifts from many individuals, families and businesses with a connection to Fairfield County help the Foundation fulfill its mission to build a legacy in our community.

2020 Members:

Partners

George and Pam Daft
Dean and Cathie DeRolph
Leonard and Kristi Gorsuch
June Harcum
Julia Johns
Diane Maguire

Patron

Suzanne Glaab-Varney
Marc and Natalie Herdman
Carolyn and Norm Hoyt
Robert Johnston
Craig and Joan Miller
Steve and Judy Root
Betty Sakas

Sponsor

Lynn and Ricardo Barboza
Molly and Dan Bates
John and Marcia Baughman
Kevin and Mary Jo Bowman
Victor and Yvette Christopher
Marilyn Clark
Wayne and Christy Custer
Jim and Judy Edwards
Robert and Sheila Heath
Eleanor Hood
William and Barbara Hunzicker
Mike and Jane Joos
Mike and Marla Lieber
Kent and Judy Miller
Thomas and Nancy Moore
Dee and Kathy Mowry
Bill and Sally Sitterley
John and Mary Snider
Dwayne and Patty Spence
Melissa Walker and
Cortland Schmelzer

Ambassadors'

Lorraine Arnold
Jim and Jay Bahnsen
Margot Barnes
Dan and Linda Bolger
Bonnie Jean Bolsen
Carol Bowen
Drs. James and Jean Bryant
Lynn Clarke
Linda Disbennet
Charles and Diane Eversole
Amy and John Eyman
Bill and Mindy Farrow
Anthony and Shirley Fortkamp
David and Nancy Gallimore
Sky and Tammy Gettys
Lorelei O. and David Gibbs
Kay Gustavson
Tom and Jean Hammer
Jackie and Bill Heath
William Lane
Nickie Leckrone
Gregg Marx and Carol Seubert Marx
Marc and Fran Miller
Deborah Monger
Jeff and Carol Sauer
Gordon B. Snider, MD
Joan Spires
Lowell and Sally Stallsmith
Tom and Susan Stoughton
John and Marilyn Sweyer
Dane and Karen Swinehart
Gary and Barbara Taylor
Terre Vandervoort and David Rader
Art and Betty Wallace
Richard and Janet Warner
Penny Wasem, CPA, CFP, PFS
Shirley Wasem
Bob Wolfinger



Contact us or complete and return the attached envelope to make a contribution to the Fairfield County Foundation or to establish a fund or scholarship.



162 East Main Street
Lancaster, Ohio 43130-3712

740.654.8451

www.fairfieldcountyfoundation.org

CHANGE SERVICE REQUESTED

NonProfit Org.
U.S. Postage
PAID
Lancaster, OH
Permit No. 284